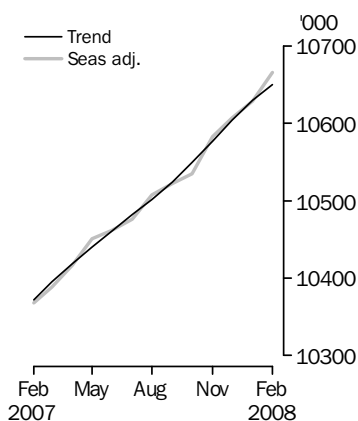


LABOUR FORCE

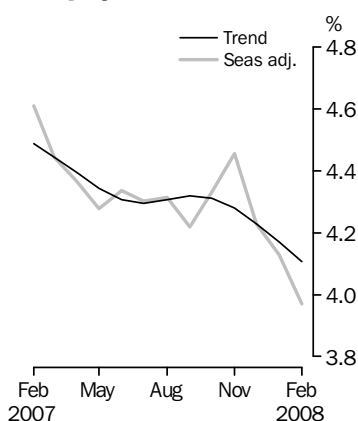
AUSTRALIA

EMBARGO: 11.30AM (CANBERRA TIME) THURS 13 MAR 2008

Employed Persons



Unemployment rate



INQUIRIES

For further information about these and related statistics, contact the National Information and Referral Service on 1300 135 070 or Mary Piechowski on Canberra (02) 6252 6525.

KEY FIGURES

	Jan 2008	Feb 2008	Jan 08 to Feb 08	Feb 07 to Feb 08
Trend				
Employed persons ('000)	10 629.1	10 649.7	20.6	2.7 %
Unemployed persons ('000)	462.3	456.0	-6.4	-6.4 %
Unemployment rate (%)	4.2	4.1	-0.1 pts	-0.4 pts
Participation rate (%)	65.2	65.2	0.0 pts	0.3 pts
Seasonally Adjusted				
Employed persons ('000)	10 628.9	10 665.5	36.7	2.9 %
Unemployed persons ('000)	457.7	440.9	-16.8	-12.0 %
Unemployment rate (%)	4.1	4.0	-0.2 pts	-0.6 pts
Participation rate (%)	65.2	65.2	0.0 pts	0.2 pts

KEY POINTS

TREND ESTIMATES (MONTHLY CHANGE)

- EMPLOYMENT increased to 10,649,700
- UNEMPLOYMENT decreased to 456,000
- UNEMPLOYMENT RATE decreased to 4.1%
- PARTICIPATION RATE remained at 65.2%

SEASONALLY ADJUSTED ESTIMATES (MONTHLY CHANGE)

EMPLOYMENT

- increased by 36,700 to 10,665,500. Full-time employment increased by 47,700 to 7,633,500 and part-time employment decreased by 11,000 to 3,032,100.

UNEMPLOYMENT

- decreased by 16,800 to 440,900. The number of persons looking for full-time work decreased by 5,800 to 293,200 and the number of persons looking for part-time work decreased by 11,000 to 147,700.

UNEMPLOYMENT RATE

- decreased by 0.2 percentage points to 4.0%. The male unemployment rate decreased by 0.1 percentage point to 3.6%, and the female unemployment rate decreased by 0.2 percentage points to 4.4%.

PARTICIPATION RATE

- remained steady at 65.2%.

NOTES

FORTHCOMING ISSUES

ISSUE	RELEASE DATE
March 2008	10 April 2008
April 2008	8 May 2008
May 2008	12 June 2008
June 2008	10 July 2008
July 2008	7 August 2008
August 2008	11 September 2008

.....

IMPLEMENTATION OF NEW SAMPLE DESIGN

Following each Census of Population and Housing, the ABS selects a new sample for the Labour Force Survey. This is done to ensure that the sample continues to accurately represent the distribution of the Australian population. A new sample has recently been selected based on the 2006 Census.

In order to reduce the potential impact of the change in sample on labour force statistics, the new sample will be introduced progressively, taking advantage of the existing rotation scheme. Using this scheme, the private dwelling sample in larger urban centres and less remote areas, representing approximately four-fifths of the total sample, will be phased in over the period November 2007 to June 2008. Within these areas, one-eighth of the new sample will be introduced each month under existing sample rotation arrangements. The rest of the sample (in remote, less populated areas and for non-private dwellings) will be introduced in two stages, March and April 2008. Detailed information about the new sample is provided in *Information Paper: Labour Force Survey Sample Design* (cat. no. 6269.0), which was released on 28 November 2007.

An analysis of the incoming and outgoing components of the sample indicates that the phasing in of the new sample has had minimal impact on the estimates.

ANNUAL SEASONAL REANALYSIS

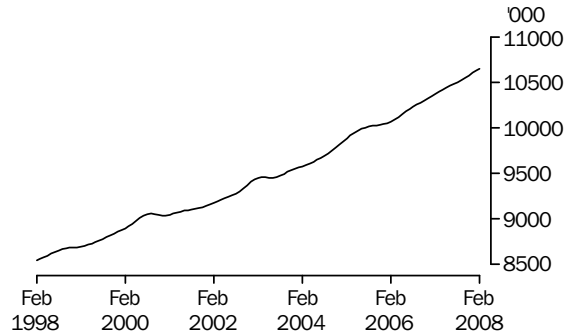
Recently, the ABS has developed improved methods of producing seasonally adjusted estimates, focused on the application of Autoregressive Integrated Moving Average (ARIMA) modelling techniques. The revision properties of the seasonally adjusted and trend estimates can be improved by the use of ARIMA modelling. ARIMA modelling relies on the characteristics of the series being analysed to project future period data. The projected values are temporary, intermediate values, that are only used internally to improve the estimation of the seasonal factors. The projected data do not affect the original estimates and are discarded at the end of the seasonal adjustment process. The ABS has implemented the improved method into the Labour Force Survey during the annual seasonal reanalysis. This month's issue of the publication is the first using the improved method.

Brian Pink
Australian Statistician

PRINCIPAL LABOUR FORCE SERIES TREND ESTIMATES

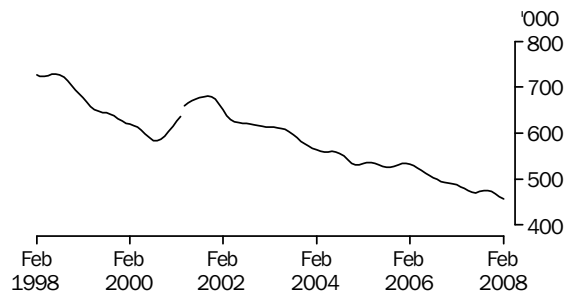
EMPLOYED PERSONS

The trend estimate of employed persons rose from 8,542,800 in February 1998 to 9,056,400 in September 2000. The trend then fell slightly to 9,037,500 in December 2000, before generally rising to stand at a high of 10,649,700 in February 2008.



UNEMPLOYED PERSONS

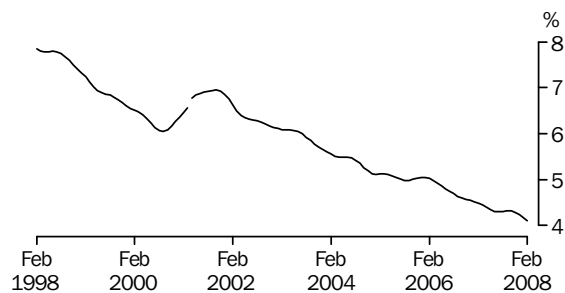
The trend estimate of unemployed persons generally fell from 727,000 in February 1998 to 582,900 in September 2000, before rising to 681,100 in October 2001. The trend has since generally fallen to stand at 456,000 in February 2008.



Series break at April 2001; see paragraph 16 of Explanatory Notes.

UNEMPLOYMENT RATE

The trend unemployment rate generally fell from 7.8% in February 1998 to 6.0% in September 2000. After rising to 7.0% in October 2001, the trend has generally fallen to stand at 4.1% in February 2008.



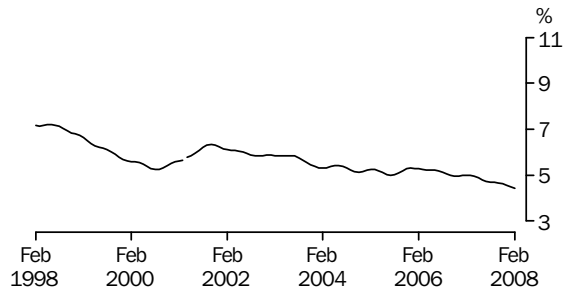
Series break at April 2001; see paragraph 16 of Explanatory Notes.

STATES TREND ESTIMATES

UNEMPLOYMENT RATE

NEW SOUTH WALES

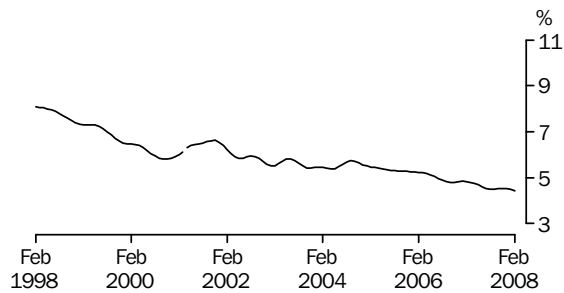
The trend estimate of the unemployment rate for New South Wales generally fell from 7.2% in February 1998 to 5.2% in August 2000. After rising to 6.3% in October 2001, the trend rate has generally fallen to stand at 4.4% in February 2008.



Series break at April 2001; see paragraph 16 of Explanatory Notes.

VICTORIA

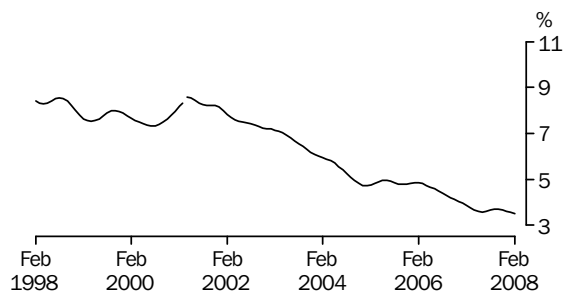
The trend estimate of the unemployment rate for Victoria generally fell from 8.1% in February 1998 to 5.8% in October 2000. The trend then rose to 6.6% in November 2001, before generally falling to stand at 4.4% in February 2008.



Series break at April 2001; see paragraph 16 of Explanatory Notes.

QUEENSLAND

The trend estimate of the unemployment rate for Queensland generally fell from 8.4% in February 1998 to 7.3% in July 2000. After rising to 8.6% in April 2001, the trend rate has generally fallen to stand at 3.5% in February 2008.

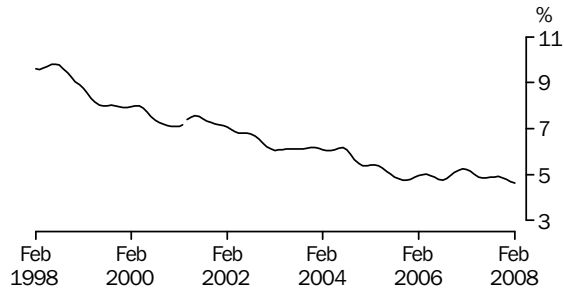


Series break at April 2001; see paragraph 16 of Explanatory Notes.

STATES TREND ESTIMATES *continued*

SOUTH AUSTRALIA

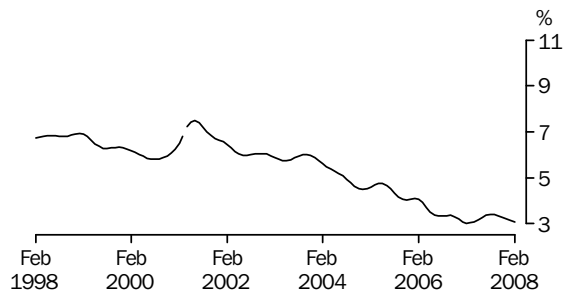
The trend estimate of the unemployment rate for South Australia rose from 9.6% in February 1998 to 9.8% in July 1998. Apart from small rises in 2001, 2004 and early 2007, the trend rate has generally fallen to stand at 4.6% in February 2008.



Series break at April 2001; see paragraph 16 of Explanatory Notes.

WESTERN AUSTRALIA

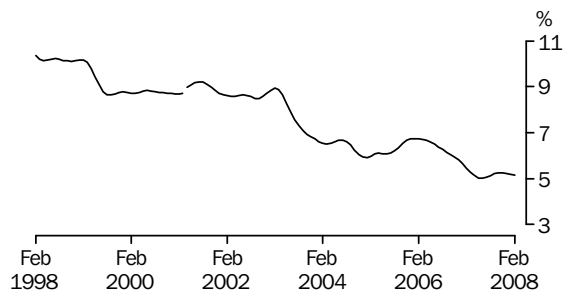
The trend estimate of the unemployment rate for Western Australia generally fell from 6.8% in February 1998 to 5.8% in August 2000. The trend then rose sharply to 7.5% in June 2001, before generally falling to 3.0% in February 2007. The trend rate has since risen slightly to stand at 3.1% in February 2008.



Series break at April 2001; see paragraph 16 of Explanatory Notes.

TASMANIA

The trend estimate of the unemployment rate for Tasmania generally fell from 10.4% in February 1998 to 8.6% in September 1999. The trend then remained relatively steady, standing at 8.9% in March 2003. Apart from a rise in late 2005, the trend rate generally fell to stand at 5.0% in June 2007. The trend rate has since risen slightly to stand at 5.1% in February 2008.



Series break at April 2001; see paragraph 16 of Explanatory Notes.

LABOUR FORCE STATUS (AGED 15 YEARS & OVER): Trend

	EMPLOYED			UNEMPLOYED		Labour force	UNEMPLOYMENT RATE		Participation rate
	Full time	Part time	Total	Looking for f/t work	Total		Looking for f/t work	Total	
	'000	'000	'000	'000	'000		'000	%	
MALES									
February 2005	4 650.5	810.3	5 460.8	225.3	283.1	5 743.9	4.6	4.9	71.8
February 2006	4 726.2	819.9	5 546.0	226.5	289.7	5 835.8	4.6	5.0	72.0
2007									
February	4 850.1	864.4	5 714.5	198.0	248.3	5 962.8	3.9	4.2	72.3
March	4 869.1	860.8	5 729.9	194.8	244.9	5 974.8	3.8	4.1	72.3
April	4 885.3	859.4	5 744.7	191.1	241.6	5 986.3	3.8	4.0	72.3
May	4 898.0	860.1	5 758.1	186.8	238.2	5 996.3	3.7	4.0	72.3
June	4 908.8	860.8	5 769.6	182.8	235.5	6 005.1	3.6	3.9	72.3
July	4 918.1	860.6	5 778.7	180.5	234.7	6 013.5	3.5	3.9	72.3
August	4 925.9	860.2	5 786.2	180.4	236.3	6 022.4	3.5	3.9	72.3
September	4 932.6	862.1	5 794.7	181.5	238.6	6 033.2	3.5	4.0	72.3
October	4 938.7	867.1	5 805.8	182.5	239.9	6 045.7	3.6	4.0	72.4
November	4 944.6	874.8	5 819.4	182.4	239.6	6 059.0	3.6	4.0	72.4
December	4 950.2	884.1	5 834.3	181.1	237.6	6 071.8	3.5	3.9	72.5
2008									
January	4 955.3	893.3	5 848.6	178.7	234.4	6 083.0	3.5	3.9	72.5
February	4 959.8	901.2	5 861.0	175.8	230.5	6 091.4	3.4	3.8	72.5
FEMALES									
February 2005	2 422.3	2 000.7	4 423.0	157.1	250.5	4 673.6	6.1	5.4	56.6
February 2006	2 460.9	2 060.6	4 521.5	148.6	242.8	4 764.3	5.7	5.1	57.0
2007									
February	2 575.0	2 081.7	4 656.8	144.7	238.8	4 895.6	5.3	4.9	57.7
March	2 582.1	2 083.4	4 665.5	143.5	238.6	4 904.0	5.3	4.9	57.7
April	2 587.8	2 085.7	4 673.6	142.8	237.3	4 910.8	5.2	4.8	57.7
May	2 591.9	2 089.8	4 681.7	142.3	235.8	4 917.4	5.2	4.8	57.7
June	2 595.3	2 095.9	4 691.2	142.0	235.3	4 926.5	5.2	4.8	57.8
July	2 599.7	2 103.1	4 702.8	141.2	235.6	4 938.4	5.2	4.8	57.8
August	2 605.8	2 110.0	4 715.8	139.6	236.3	4 952.1	5.1	4.8	57.9
September	2 614.4	2 115.2	4 729.7	137.3	236.4	4 966.1	5.0	4.8	58.0
October	2 624.8	2 119.0	4 743.8	134.8	235.4	4 979.2	4.9	4.7	58.0
November	2 635.6	2 121.9	4 757.5	132.5	233.3	4 990.8	4.8	4.7	58.1
December	2 644.8	2 124.9	4 769.8	130.5	230.6	5 000.4	4.7	4.6	58.1
2008									
January	2 652.3	2 128.2	4 780.5	128.8	227.9	5 008.4	4.6	4.6	58.1
February	2 657.6	2 131.1	4 788.8	127.5	225.5	5 014.2	4.6	4.5	58.1
PERSONS									
February 2005	7 072.8	2 811.1	9 883.8	382.4	533.7	10 417.5	5.1	5.1	64.1
February 2006	7 187.1	2 880.4	10 067.5	375.1	532.6	10 600.1	5.0	5.0	64.4
2007									
February	7 425.2	2 946.1	10 371.3	342.7	487.1	10 858.4	4.4	4.5	64.9
March	7 451.2	2 944.2	10 395.4	338.4	483.5	10 878.8	4.3	4.4	64.9
April	7 473.1	2 945.2	10 418.3	333.8	478.9	10 897.2	4.3	4.4	64.9
May	7 489.9	2 949.9	10 439.7	329.1	474.0	10 913.7	4.2	4.3	64.9
June	7 504.1	2 956.7	10 460.8	324.7	470.8	10 931.5	4.1	4.3	64.9
July	7 517.9	2 963.7	10 481.5	321.7	470.4	10 951.9	4.1	4.3	65.0
August	7 531.8	2 970.2	10 502.0	320.0	472.5	10 974.5	4.1	4.3	65.0
September	7 547.0	2 977.3	10 524.3	318.8	475.0	10 999.3	4.1	4.3	65.1
October	7 563.5	2 986.0	10 549.5	317.3	475.3	11 024.8	4.0	4.3	65.1
November	7 580.2	2 996.7	10 576.9	315.0	472.8	11 049.7	4.0	4.3	65.1
December	7 595.0	3 009.0	10 604.0	311.6	468.2	11 072.3	3.9	4.2	65.2
2008									
January	7 607.6	3 021.5	10 629.1	307.4	462.3	11 091.4	3.9	4.2	65.2
February	7 617.4	3 032.3	10 649.7	303.3	456.0	11 105.7	3.8	4.1	65.2

LABOUR FORCE STATUS (AGED 15 YEARS & OVER): **Seasonally Adjusted**

	EMPLOYED			UNEMPLOYED		Labour force	UNEMPLOYMENT RATE		Participation rate
	Full time	Part time	Total	Looking for f/t work	Total		Looking for f/t work	Total	
	'000	'000	'000	'000	'000		'000	%	
MALES									
February 2005	4 654.5	802.6	5 457.1	221.3	282.1	5 739.2	4.5	4.9	71.8
February 2006	4 721.4	828.1	5 549.5	233.7	297.9	5 847.4	4.7	5.1	72.1
2007									
February	4 850.4	859.8	5 710.2	201.5	254.0	5 964.2	4.0	4.3	72.3
March	4 871.5	857.8	5 729.3	194.2	246.5	5 975.8	3.8	4.1	72.3
April	4 884.3	859.8	5 744.1	190.7	237.8	5 981.9	3.8	4.0	72.3
May	4 903.2	857.1	5 760.3	182.5	234.6	5 994.9	3.6	3.9	72.3
June	4 906.5	867.2	5 773.6	188.3	239.3	6 013.0	3.7	4.0	72.4
July	4 919.5	859.2	5 778.8	180.9	234.5	6 013.3	3.5	3.9	72.3
August	4 922.9	867.3	5 790.2	176.3	238.0	6 028.2	3.5	3.9	72.4
September	4 929.2	865.2	5 794.4	175.3	228.3	6 022.8	3.4	3.8	72.2
October	4 944.4	845.6	5 790.0	180.9	238.9	6 028.9	3.5	4.0	72.2
November	4 948.8	874.0	5 822.7	193.1	251.2	6 073.9	3.8	4.1	72.6
December	4 945.9	884.4	5 830.4	190.4	248.6	6 079.0	3.7	4.1	72.5
2008									
January	4 947.2	912.7	5 859.9	171.5	226.4	6 086.3	3.4	3.7	72.5
February	4 969.6	898.2	5 867.8	165.9	218.6	6 086.4	3.2	3.6	72.4
FEMALES									
February 2005	2 428.9	1 992.5	4 421.5	158.8	250.5	4 672.0	6.1	5.4	56.6
February 2006	2 467.8	2 047.9	4 515.7	151.2	244.5	4 760.1	5.8	5.1	56.9
2007									
February	2 568.5	2 089.0	4 657.5	141.8	246.8	4 904.4	5.2	5.0	57.8
March	2 586.0	2 073.1	4 659.1	142.3	236.4	4 895.5	5.2	4.8	57.6
April	2 577.8	2 095.1	4 672.9	139.0	237.7	4 910.6	5.1	4.8	57.7
May	2 618.0	2 072.1	4 690.1	144.1	232.3	4 922.4	5.2	4.7	57.8
June	2 587.3	2 100.1	4 687.4	143.3	234.8	4 922.2	5.2	4.8	57.7
July	2 588.9	2 108.2	4 697.1	143.7	236.4	4 933.6	5.3	4.8	57.8
August	2 614.2	2 103.4	4 717.6	139.9	235.6	4 953.2	5.1	4.8	57.9
September	2 594.1	2 133.9	4 728.0	134.2	235.1	4 963.1	4.9	4.7	57.9
October	2 635.8	2 109.4	4 745.1	134.1	238.0	4 983.2	4.8	4.8	58.1
November	2 642.6	2 117.0	4 759.7	135.0	242.2	5 001.9	4.9	4.8	58.2
December	2 651.4	2 125.7	4 777.1	130.1	219.8	4 996.9	4.7	4.4	58.1
2008									
January	2 638.6	2 130.4	4 769.0	127.5	231.3	5 000.3	4.6	4.6	58.0
February	2 663.8	2 133.9	4 797.7	127.3	222.3	5 020.0	4.6	4.4	58.2
PERSONS									
February 2005	7 083.4	2 795.1	9 878.5	380.2	532.6	10 411.1	5.1	5.1	64.1
February 2006	7 189.2	2 876.0	10 065.1	384.9	542.4	10 607.5	5.1	5.1	64.4
2007									
February	7 418.9	2 948.8	10 367.7	343.2	500.8	10 868.5	4.4	4.6	64.9
March	7 457.4	2 930.9	10 388.4	336.5	483.0	10 871.3	4.3	4.4	64.9
April	7 462.0	2 954.9	10 417.0	329.7	475.6	10 892.6	4.2	4.4	64.9
May	7 521.3	2 929.2	10 450.5	326.6	466.8	10 917.3	4.2	4.3	65.0
June	7 493.8	2 967.2	10 461.0	331.6	474.2	10 935.2	4.2	4.3	65.0
July	7 508.5	2 967.4	10 475.9	324.6	470.9	10 946.8	4.1	4.3	64.9
August	7 537.1	2 970.7	10 507.8	316.3	473.6	10 981.3	4.0	4.3	65.1
September	7 523.3	2 999.1	10 522.4	309.6	463.4	10 985.8	4.0	4.2	65.0
October	7 580.2	2 955.0	10 535.2	315.0	476.9	11 012.1	4.0	4.3	65.0
November	7 591.4	2 991.0	10 582.4	328.1	493.4	11 075.8	4.1	4.5	65.3
December	7 597.3	3 010.1	10 607.4	320.5	468.4	11 075.9	4.0	4.2	65.2
2008									
January	7 585.8	3 043.1	10 628.9	299.0	457.7	11 086.6	3.8	4.1	65.2
February	7 633.5	3 032.1	10 665.5	293.2	440.9	11 106.4	3.7	4.0	65.2

LABOUR FORCE STATUS (AGED 15 YEARS & OVER): Original

	EMPLOYED			UNEMPLOYED			UNEMPLOYMENT RATE			Participation rate	
	Full time	Part time	Total	Looking for f/t work	Total	Labour force	Not in labour force	Civilian population aged 15 years and over	Looking for f/t work		Total
	'000	'000	'000	'000	'000	'000	'000	'000	%		%
MALES											
February 2005	4 675.1	772.5	5 447.6	243.6	311.2	5 758.8	2 237.0	7 995.8	5.0	5.4	72.0
February 2006	4 742.5	797.1	5 539.7	256.9	328.7	5 868.4	2 241.5	8 109.9	5.1	5.6	72.4
2007											
February	4 870.8	828.9	5 699.7	221.6	280.6	5 980.3	2 271.3	8 251.6	4.4	4.7	72.5
March	4 862.3	871.7	5 734.0	192.8	252.2	5 986.2	2 278.0	8 264.3	3.8	4.2	72.4
April	4 864.0	882.7	5 746.7	191.4	241.2	5 987.9	2 288.7	8 276.6	3.8	4.0	72.3
May	4 891.3	862.6	5 753.8	182.2	236.0	5 989.8	2 299.4	8 289.2	3.6	3.9	72.3
June	4 883.3	893.3	5 776.5	185.5	231.1	6 007.6	2 294.0	8 301.6	3.7	3.8	72.4
July	4 931.0	861.7	5 792.6	165.7	210.9	6 003.6	2 310.1	8 313.6	3.3	3.5	72.2
August	4 883.6	866.1	5 749.7	167.8	225.0	5 974.7	2 351.1	8 325.8	3.3	3.8	71.8
September	4 966.8	859.4	5 826.2	176.2	232.8	6 059.1	2 278.8	8 337.9	3.4	3.8	72.7
October	4 930.5	862.7	5 793.2	174.2	229.5	6 022.7	2 329.3	8 352.0	3.4	3.8	72.1
November	4 940.2	858.9	5 799.1	185.1	235.9	6 034.9	2 331.5	8 366.4	3.6	3.9	72.1
December	5 005.1	886.0	5 891.1	189.3	249.9	6 141.0	2 239.5	8 380.5	3.6	4.1	73.3
2008											
January	4 955.9	873.2	5 829.1	194.8	252.5	6 081.6	2 312.8	8 394.3	3.8	4.2	72.4
February	4 991.7	866.3	5 858.0	182.5	241.8	6 099.9	2 308.5	8 408.3	3.5	4.0	72.5
FEMALES											
February 2005	2 448.2	1 948.1	4 396.3	185.9	291.5	4 687.8	3 569.7	8 257.5	7.1	6.2	56.8
February 2006	2 488.0	1 999.4	4 487.4	177.8	284.5	4 771.9	3 587.9	8 359.9	6.7	6.0	57.1
2007											
February	2 589.7	2 038.3	4 628.0	167.3	286.9	4 914.9	3 570.2	8 485.0	6.1	5.8	57.9
March	2 559.4	2 098.9	4 658.3	151.3	259.3	4 917.7	3 578.3	8 495.9	5.6	5.3	57.9
April	2 542.4	2 114.6	4 657.1	140.3	243.5	4 900.6	3 606.7	8 507.3	5.2	5.0	57.6
May	2 587.6	2 109.8	4 697.4	142.7	230.4	4 927.8	3 590.9	8 518.7	5.2	4.7	57.8
June	2 565.4	2 131.4	4 696.8	140.7	228.8	4 925.5	3 604.5	8 530.1	5.2	4.6	57.7
July	2 593.9	2 101.4	4 695.3	132.9	215.7	4 911.1	3 630.8	8 541.9	4.9	4.4	57.5
August	2 574.2	2 111.9	4 686.1	127.9	222.6	4 908.7	3 645.2	8 553.9	4.7	4.5	57.4
September	2 650.2	2 135.3	4 785.5	128.6	232.6	5 018.1	3 547.6	8 565.7	4.6	4.6	58.6
October	2 625.2	2 127.3	4 752.6	122.4	219.8	4 972.4	3 607.3	8 579.7	4.5	4.4	58.0
November	2 649.6	2 112.9	4 762.6	122.2	216.9	4 979.4	3 614.2	8 593.6	4.4	4.4	57.9
December	2 716.2	2 127.5	4 843.7	131.7	219.9	5 063.6	3 544.0	8 607.6	4.6	4.3	58.8
2008											
January	2 665.4	2 047.0	4 712.3	146.9	249.9	4 962.2	3 657.8	8 620.0	5.2	5.0	57.6
February	2 686.0	2 082.3	4 768.4	149.8	257.8	5 026.2	3 606.4	8 632.6	5.3	5.1	58.2
PERSONS											
February 2005	7 123.3	2 720.5	9 843.9	429.5	602.7	10 446.6	5 806.7	16 253.3	5.7	5.8	64.3
February 2006	7 230.5	2 796.5	10 027.1	434.7	613.3	10 640.3	5 829.5	16 469.8	5.7	5.8	64.6
2007											
February	7 460.5	2 867.2	10 327.7	388.8	567.5	10 895.2	5 841.4	16 736.6	5.0	5.2	65.1
March	7 421.7	2 970.7	10 392.4	344.1	511.5	10 903.9	5 856.3	16 760.2	4.4	4.7	65.1
April	7 406.4	2 997.3	10 403.7	331.8	484.8	10 888.5	5 895.4	16 783.9	4.3	4.5	64.9
May	7 478.9	2 972.4	10 451.2	324.9	466.4	10 917.6	5 890.3	16 807.9	4.2	4.3	65.0
June	7 448.6	3 024.7	10 473.3	326.2	459.8	10 933.1	5 898.5	16 831.6	4.2	4.2	65.0
July	7 524.9	2 963.1	10 488.0	298.6	426.6	10 914.6	5 940.9	16 855.5	3.8	3.9	64.8
August	7 457.8	2 978.0	10 435.8	295.8	447.7	10 883.4	5 996.3	16 879.7	3.8	4.1	64.5
September	7 616.9	2 994.7	10 611.7	304.8	465.5	11 077.1	5 826.5	16 903.6	3.8	4.2	65.5
October	7 555.7	2 990.1	10 545.8	296.7	449.3	10 995.1	5 936.6	16 931.7	3.8	4.1	64.9
November	7 589.8	2 971.8	10 561.6	307.3	452.7	11 014.3	5 945.7	16 960.0	3.9	4.1	64.9
December	7 721.2	3 013.5	10 734.8	320.9	469.8	11 204.6	5 783.5	16 988.1	4.0	4.2	66.0
2008											
January	7 621.3	2 920.1	10 541.4	341.7	502.4	11 043.8	5 970.5	17 014.3	4.3	4.5	64.9
February	7 677.8	2 948.6	10 626.4	332.3	499.6	11 126.0	5 914.9	17 040.9	4.1	4.5	65.3

LABOUR FORCE STATUS (AGED 15 YEARS & OVER)—New South Wales

	TREND					SEASONALLY ADJUSTED					
	<i>Employed full time</i>	<i>Total employed</i>	<i>Total unemp-loyed</i>	<i>Unemp-loyment rate</i>	<i>Partici-pation rate</i>	<i>Employed full time</i>	<i>Total employed</i>	<i>Total unemp-loyed</i>	<i>Unemp-loyment rate</i>	<i>Partici-pation rate</i>	<i>Civilian population aged 15 years and over</i>
	'000	'000	'000	%	%	'000	'000	'000	%	%	'000
MALES											
February 2005	1 520.3	1 785.9	95.6	5.1	70.4	1 520.9	1 785.3	95.9	5.1	70.4	2 673.9
February 2006	1 540.1	1 800.3	103.2	5.4	70.5	1 535.1	1 801.5	104.1	5.5	70.6	2 698.3
2007											
February	1 558.3	1 842.8	87.0	4.5	70.7	1 560.9	1 839.0	93.4	4.8	70.8	2 730.7
March	1 564.2	1 845.4	86.5	4.5	70.7	1 560.6	1 843.8	84.6	4.4	70.5	2 733.6
April	1 568.6	1 848.8	86.2	4.5	70.7	1 570.8	1 848.9	86.5	4.5	70.7	2 736.5
May	1 571.8	1 853.1	85.4	4.4	70.8	1 576.4	1 852.6	84.7	4.4	70.7	2 739.5
June	1 574.8	1 857.4	84.2	4.3	70.8	1 573.2	1 860.0	85.3	4.4	70.9	2 742.4
July	1 577.9	1 860.8	83.1	4.3	70.8	1 574.3	1 861.6	83.7	4.3	70.9	2 745.4
August	1 581.1	1 862.6	83.0	4.3	70.8	1 579.4	1 862.6	82.6	4.2	70.8	2 748.5
September	1 583.7	1 863.5	83.5	4.3	70.8	1 580.8	1 865.2	80.9	4.2	70.7	2 751.5
October	1 585.6	1 864.6	84.2	4.3	70.7	1 594.4	1 864.0	81.1	4.2	70.6	2 755.0
November	1 586.7	1 866.3	84.6	4.3	70.7	1 590.8	1 863.8	89.2	4.6	70.8	2 758.4
December	1 587.0	1 868.8	84.6	4.3	70.7	1 581.9	1 865.9	87.5	4.5	70.7	2 761.8
2008											
January	1 586.8	1 871.6	84.1	4.3	70.7	1 581.8	1 871.4	85.7	4.4	70.8	2 765.0
February	1 586.3	1 874.4	83.3	4.3	70.8	1 588.9	1 881.3	76.9	3.9	70.7	2 768.2
FEMALES											
February 2005	806.2	1 431.3	83.1	5.5	54.9	816.5	1 430.4	83.7	5.5	54.9	2 758.3
February 2006	817.9	1 463.7	78.4	5.1	55.4	819.2	1 464.8	73.6	4.8	55.3	2 782.9
2007											
February	835.2	1 480.1	87.5	5.6	55.7	836.0	1 474.8	88.7	5.7	55.6	2 814.0
March	835.0	1 480.8	88.2	5.6	55.7	830.1	1 475.2	86.1	5.5	55.4	2 816.6
April	836.0	1 482.6	87.3	5.6	55.7	828.7	1 473.9	90.1	5.8	55.5	2 819.5
May	837.3	1 485.5	85.8	5.5	55.7	850.9	1 500.3	87.3	5.5	56.3	2 822.4
June	838.5	1 489.3	84.4	5.4	55.7	836.8	1 493.3	80.0	5.1	55.7	2 825.2
July	839.9	1 493.4	83.3	5.3	55.8	838.1	1 487.2	83.5	5.3	55.5	2 828.2
August	841.9	1 497.4	82.4	5.2	55.8	844.6	1 493.6	82.3	5.2	55.7	2 831.2
September	844.9	1 502.1	81.6	5.2	55.9	839.0	1 503.5	81.5	5.1	55.9	2 834.2
October	849.0	1 507.9	80.6	5.1	56.0	844.0	1 507.4	83.2	5.2	56.1	2 837.7
November	854.0	1 514.7	79.3	5.0	56.1	860.2	1 516.2	79.5	5.0	56.2	2 841.1
December	858.6	1 521.2	77.7	4.9	56.2	862.1	1 521.0	76.1	4.8	56.1	2 844.6
2008											
January	862.5	1 527.0	76.1	4.7	56.3	861.8	1 526.6	76.1	4.7	56.3	2 847.4
February	865.3	1 531.5	74.7	4.7	56.4	864.1	1 534.6	73.8	4.6	56.4	2 850.2
PERSONS											
February 2005	2 326.5	3 217.3	178.6	5.3	62.5	2 337.4	3 215.7	179.6	5.3	62.5	5 432.1
February 2006	2 358.0	3 263.9	181.6	5.3	62.9	2 354.2	3 266.3	177.8	5.2	62.8	5 481.2
2007											
February	2 393.5	3 322.9	174.5	5.0	63.1	2 396.9	3 313.9	182.1	5.2	63.1	5 544.6
March	2 399.2	3 326.1	174.7	5.0	63.1	2 390.6	3 319.0	170.7	4.9	62.9	5 550.2
April	2 404.6	3 331.4	173.5	5.0	63.1	2 399.5	3 322.7	176.6	5.0	63.0	5 556.0
May	2 409.1	3 338.6	171.1	4.9	63.1	2 427.2	3 352.9	172.0	4.9	63.4	5 561.8
June	2 413.3	3 346.7	168.6	4.8	63.1	2 409.9	3 353.3	165.2	4.7	63.2	5 567.6
July	2 417.9	3 354.2	166.4	4.7	63.2	2 412.3	3 348.8	167.3	4.8	63.1	5 573.6
August	2 423.0	3 360.0	165.4	4.7	63.2	2 424.0	3 356.2	164.9	4.7	63.1	5 579.7
September	2 428.6	3 365.6	165.1	4.7	63.2	2 419.8	3 368.7	162.5	4.6	63.2	5 585.8
October	2 434.6	3 372.5	164.8	4.7	63.2	2 438.5	3 371.5	164.3	4.6	63.2	5 592.6
November	2 440.7	3 381.0	163.9	4.6	63.3	2 451.0	3 379.9	168.7	4.8	63.4	5 599.5
December	2 445.6	3 389.9	162.3	4.6	63.4	2 444.0	3 387.0	163.6	4.6	63.3	5 606.4
2008											
January	2 449.3	3 398.6	160.2	4.5	63.4	2 443.6	3 397.9	161.8	4.5	63.4	5 612.4
February	2 451.7	3 405.9	158.1	4.4	63.5	2 452.9	3 415.9	150.7	4.2	63.5	5 618.4

LABOUR FORCE STATUS (AGED 15 YEARS & OVER)—Victoria

	TREND					SEASONALLY ADJUSTED					
	<i>Employed full time</i>	<i>Total employed</i>	<i>Total unemp-loyed</i>	<i>Unemp-loyment rate</i>	<i>Partici-pation rate</i>	<i>Employed full time</i>	<i>Total employed</i>	<i>Total unemp-loyed</i>	<i>Unemp-loyment rate</i>	<i>Partici-pation rate</i>	<i>Civilian population aged 15 years and over</i>
	'000	'000	'000	%	%	'000	'000	'000	%	%	'000
MALES											
February 2005	1 153.2	1 358.2	76.1	5.3	72.5	1 148.9	1 356.2	77.5	5.4	72.5	1 977.8
February 2006	1 157.1	1 367.5	72.0	5.0	71.8	1 154.5	1 369.6	74.5	5.2	72.0	2 005.0
2007											
February	1 188.9	1 411.8	65.8	4.5	72.5	1 191.7	1 414.1	65.3	4.4	72.6	2 039.0
March	1 194.9	1 416.8	65.0	4.4	72.6	1 195.3	1 416.4	66.5	4.5	72.6	2 042.3
April	1 200.2	1 421.5	63.8	4.3	72.6	1 199.8	1 421.7	63.0	4.2	72.6	2 045.6
May	1 204.1	1 425.2	62.5	4.2	72.6	1 206.9	1 427.1	63.3	4.2	72.7	2 048.8
June	1 206.9	1 428.0	60.9	4.1	72.6	1 208.4	1 427.1	58.5	3.9	72.4	2 052.0
July	1 208.6	1 430.1	59.9	4.0	72.5	1 209.0	1 430.9	59.9	4.0	72.6	2 054.5
August	1 209.5	1 431.9	59.8	4.0	72.5	1 201.3	1 432.2	65.1	4.3	72.8	2 057.1
September	1 210.4	1 434.4	60.3	4.0	72.6	1 217.5	1 436.2	54.2	3.6	72.4	2 059.6
October	1 211.7	1 437.8	61.0	4.1	72.6	1 212.6	1 431.6	58.3	3.9	72.2	2 063.0
November	1 213.3	1 442.3	61.5	4.1	72.8	1 210.0	1 443.4	63.6	4.2	72.9	2 066.4
December	1 215.2	1 447.0	61.4	4.1	72.9	1 211.7	1 442.9	68.8	4.6	73.0	2 069.8
2008											
January	1 217.0	1 451.6	60.8	4.0	73.0	1 220.9	1 460.7	59.7	3.9	73.3	2 073.2
February	1 218.9	1 455.6	59.9	4.0	73.0	1 220.0	1 455.0	54.1	3.6	72.7	2 076.5
FEMALES											
February 2005	593.1	1 106.9	66.3	5.7	56.6	592.1	1 104.6	66.7	5.7	56.5	2 072.8
February 2006	601.6	1 121.5	65.5	5.5	56.6	605.5	1 120.4	66.5	5.6	56.6	2 097.8
2007											
February	628.3	1 156.2	64.6	5.3	57.3	622.4	1 157.2	64.4	5.3	57.4	2 129.3
March	631.6	1 160.5	64.9	5.3	57.5	639.0	1 159.0	64.1	5.2	57.4	2 132.2
April	633.5	1 163.6	65.0	5.3	57.5	628.2	1 171.1	65.5	5.3	57.9	2 135.1
May	634.1	1 165.6	64.5	5.2	57.5	638.6	1 164.7	64.3	5.2	57.5	2 137.9
June	634.5	1 167.0	63.8	5.2	57.5	634.3	1 160.7	67.4	5.5	57.4	2 140.8
July	635.1	1 168.7	63.2	5.1	57.5	630.4	1 170.5	59.1	4.8	57.4	2 143.4
August	636.0	1 171.4	62.9	5.1	57.5	639.7	1 173.8	65.0	5.2	57.7	2 146.1
September	637.2	1 175.1	62.9	5.1	57.6	632.1	1 171.0	60.2	4.9	57.3	2 148.7
October	638.8	1 179.4	63.1	5.1	57.7	643.0	1 179.8	60.5	4.9	57.6	2 152.0
November	640.3	1 183.5	63.4	5.1	57.9	638.7	1 181.6	70.1	5.6	58.1	2 155.3
December	641.7	1 187.1	63.4	5.1	57.9	647.4	1 195.1	61.3	4.9	58.2	2 158.6
2008											
January	643.0	1 190.0	63.2	5.0	58.0	633.5	1 186.9	63.9	5.1	57.9	2 161.8
February	643.8	1 192.4	62.5	5.0	58.0	649.3	1 191.8	60.2	4.8	57.8	2 165.0
PERSONS											
February 2005	1 746.3	2 465.1	142.4	5.5	64.4	1 741.0	2 460.8	144.1	5.5	64.3	4 050.6
February 2006	1 758.7	2 489.0	137.5	5.2	64.0	1 760.1	2 490.0	141.0	5.4	64.1	4 102.8
2007											
February	1 817.2	2 567.9	130.4	4.8	64.7	1 814.1	2 571.3	129.8	4.8	64.8	4 168.3
March	1 826.5	2 577.3	129.9	4.8	64.8	1 834.4	2 575.5	130.6	4.8	64.8	4 174.5
April	1 833.7	2 585.1	128.9	4.7	64.9	1 828.0	2 592.8	128.6	4.7	65.1	4 180.6
May	1 838.2	2 590.8	127.0	4.7	64.9	1 845.4	2 591.8	127.7	4.7	65.0	4 186.7
June	1 841.4	2 595.0	124.8	4.6	64.9	1 842.7	2 587.8	125.9	4.6	64.7	4 192.8
July	1 843.6	2 598.8	123.1	4.5	64.8	1 839.4	2 601.3	119.0	4.4	64.8	4 198.0
August	1 845.5	2 603.3	122.6	4.5	64.9	1 841.0	2 606.0	130.1	4.8	65.1	4 203.2
September	1 847.7	2 609.4	123.2	4.5	64.9	1 849.6	2 607.2	114.4	4.2	64.7	4 208.3
October	1 850.4	2 617.3	124.2	4.5	65.0	1 855.6	2 611.4	118.9	4.4	64.8	4 215.0
November	1 853.6	2 625.8	124.8	4.5	65.2	1 848.7	2 625.0	133.8	4.8	65.3	4 221.7
December	1 856.9	2 634.1	124.7	4.5	65.2	1 859.1	2 638.0	130.1	4.7	65.5	4 228.4
2008											
January	1 860.0	2 641.6	124.0	4.5	65.3	1 854.5	2 647.6	123.6	4.5	65.4	4 234.9
February	1 862.7	2 647.9	122.4	4.4	65.4	1 869.3	2 646.8	114.3	4.1	65.1	4 241.5

	TREND					SEASONALLY ADJUSTED					
	Employed full time	Total employed	Total unemployed	Unemployment rate	Participation rate	Employed full time	Total employed	Total unemployed	Unemployment rate	Participation rate	Civilian population aged 15 years and over
	'000	'000	'000	%	%	'000	'000	'000	%	%	'000
MALES											
February 2005	920.8	1 075.5	49.1	4.4	72.9	925.2	1 075.1	45.0	4.0	72.6	1 542.3
February 2006	947.8	1 104.8	52.3	4.5	73.3	950.2	1 106.8	54.4	4.7	73.5	1 579.0
2007											
February	999.6	1 162.4	41.4	3.4	74.3	994.3	1 160.1	40.2	3.3	74.0	1 620.9
March	1 004.5	1 166.3	40.5	3.4	74.3	1 009.3	1 166.5	43.4	3.6	74.5	1 624.4
April	1 007.6	1 168.5	39.4	3.3	74.2	1 007.1	1 168.9	38.7	3.2	74.2	1 627.7
May	1 009.3	1 169.9	38.3	3.2	74.1	1 011.9	1 172.6	37.5	3.1	74.2	1 631.2
June	1 010.3	1 170.9	37.8	3.1	73.9	1 008.1	1 170.2	38.6	3.2	74.0	1 634.6
July	1 011.2	1 172.1	38.1	3.1	73.9	1 007.9	1 168.7	35.9	3.0	73.5	1 638.1
August	1 012.0	1 173.7	38.8	3.2	73.9	1 015.1	1 173.5	36.8	3.0	73.7	1 641.6
September	1 012.8	1 175.7	39.5	3.3	73.9	1 011.0	1 177.4	41.0	3.4	74.1	1 645.1
October	1 013.7	1 178.1	39.6	3.3	73.8	1 013.8	1 176.8	42.8	3.5	74.0	1 648.9
November	1 014.3	1 180.5	39.1	3.2	73.8	1 016.0	1 181.4	41.0	3.4	73.9	1 652.9
December	1 014.6	1 182.6	38.2	3.1	73.7	1 015.5	1 183.6	37.4	3.1	73.7	1 656.7
2008											
January	1 014.7	1 184.4	37.3	3.1	73.6	1 012.3	1 183.7	31.9	2.6	73.2	1 660.5
February	1 014.5	1 185.6	36.4	3.0	73.5	1 015.0	1 186.1	38.8	3.2	73.6	1 664.3
FEMALES											
February 2005	491.3	881.0	48.4	5.2	58.8	492.7	878.7	47.6	5.1	58.6	1 580.2
February 2006	493.0	901.6	50.0	5.3	59.1	500.1	900.1	52.0	5.5	59.1	1 611.4
2007											
February	543.3	955.3	44.1	4.4	60.7	545.0	955.8	48.8	4.9	61.0	1 646.9
March	546.0	957.6	42.8	4.3	60.6	545.5	959.6	44.5	4.4	60.9	1 649.9
April	547.5	958.8	41.7	4.2	60.5	552.4	961.4	37.5	3.8	60.4	1 653.0
May	547.4	959.2	41.1	4.1	60.4	549.5	956.0	38.1	3.8	60.0	1 656.2
June	546.6	960.0	41.2	4.1	60.3	547.0	960.3	41.1	4.1	60.4	1 659.3
July	546.0	962.0	41.9	4.2	60.4	541.0	958.9	45.3	4.5	60.4	1 662.8
August	545.9	965.0	42.7	4.2	60.5	544.0	963.7	42.6	4.2	60.4	1 666.4
September	546.6	968.2	43.2	4.3	60.6	542.4	969.5	44.0	4.3	60.7	1 669.9
October	547.5	971.0	43.1	4.2	60.6	554.8	972.9	42.0	4.1	60.6	1 673.8
November	547.8	973.0	42.7	4.2	60.5	551.4	976.9	43.5	4.3	60.8	1 677.7
December	547.5	974.3	42.5	4.2	60.5	548.3	974.6	40.6	4.0	60.4	1 681.6
2008											
January	546.8	975.2	42.4	4.2	60.4	537.2	967.6	43.8	4.3	60.0	1 685.1
February	545.9	975.6	42.4	4.2	60.3	549.1	979.2	42.3	4.1	60.5	1 688.7
PERSONS											
February 2005	1 412.1	1 956.5	97.5	4.7	65.8	1 417.9	1 953.8	92.6	4.5	65.5	3 122.5
February 2006	1 440.9	2 006.5	102.3	4.9	66.1	1 450.3	2 006.9	106.4	5.0	66.2	3 190.4
2007											
February	1 543.0	2 117.8	85.5	3.9	67.4	1 539.4	2 115.9	89.0	4.0	67.5	3 267.9
March	1 550.5	2 123.8	83.3	3.8	67.4	1 554.8	2 126.1	87.9	4.0	67.6	3 274.3
April	1 555.1	2 127.4	81.1	3.7	67.3	1 559.4	2 130.3	76.2	3.5	67.3	3 280.8
May	1 556.7	2 129.1	79.3	3.6	67.2	1 561.4	2 128.6	75.6	3.4	67.1	3 287.4
June	1 556.9	2 130.9	79.0	3.6	67.1	1 555.2	2 130.5	79.8	3.6	67.1	3 293.9
July	1 557.2	2 134.1	80.0	3.6	67.1	1 548.9	2 127.6	81.2	3.7	66.9	3 300.9
August	1 557.9	2 138.7	81.6	3.7	67.1	1 559.1	2 137.2	79.5	3.6	67.0	3 308.0
September	1 559.4	2 143.9	82.7	3.7	67.2	1 553.4	2 146.9	85.0	3.8	67.3	3 315.0
October	1 561.2	2 149.2	82.7	3.7	67.2	1 568.6	2 149.7	84.8	3.8	67.3	3 322.7
November	1 562.1	2 153.5	81.8	3.7	67.1	1 567.5	2 158.2	84.5	3.8	67.3	3 330.6
December	1 562.1	2 156.9	80.7	3.6	67.0	1 563.8	2 158.2	78.1	3.5	67.0	3 338.3
2008											
January	1 561.5	2 159.6	79.7	3.6	67.0	1 549.5	2 151.3	75.6	3.4	66.6	3 345.6
February	1 560.4	2 161.2	78.8	3.5	66.9	1 564.1	2 165.3	81.0	3.6	67.0	3 353.0

LABOUR FORCE STATUS (AGED 15 YEARS & OVER)—South Australia

	TREND					SEASONALLY ADJUSTED					Civilian population aged 15 years and over
	Employed full time	Total employed	Total unemployed	Unemployment rate	Participation rate	Employed full time	Total employed	Total unemployed	Unemployment rate	Participation rate	
	'000	'000	'000	%	%	'000	'000	'000	%	%	
MALES											
February 2005	342.6	404.6	23.5	5.5	69.6	343.0	404.0	24.6	5.7	69.6	615.4
February 2006	339.9	404.6	22.6	5.3	68.8	339.4	406.7	22.0	5.1	69.0	621.1
2007											
February	342.2	408.8	24.0	5.5	68.9	343.0	409.9	23.8	5.5	69.1	627.8
March	342.1	409.1	23.6	5.4	68.9	343.1	405.9	22.8	5.3	68.2	628.4
April	342.7	410.0	22.9	5.3	68.8	340.5	410.4	22.6	5.2	68.8	629.1
May	343.3	411.2	22.2	5.1	68.8	343.7	413.9	21.4	4.9	69.1	629.7
June	343.9	412.1	21.9	5.1	68.9	345.0	412.2	22.1	5.1	68.9	630.4
July	344.6	413.1	21.9	5.0	68.9	344.1	410.4	23.3	5.4	68.7	631.1
August	345.3	414.1	22.0	5.1	69.0	347.0	417.7	21.2	4.8	69.5	631.8
September	346.0	415.4	22.1	5.1	69.2	345.2	414.0	20.0	4.6	68.6	632.5
October	346.9	417.1	22.0	5.0	69.3	343.9	413.9	25.2	5.7	69.3	633.3
November	347.9	419.2	21.7	4.9	69.5	350.9	421.2	20.6	4.7	69.7	634.1
December	349.0	421.2	21.2	4.8	69.7	348.1	421.3	22.3	5.0	69.9	634.9
2008											
January	350.1	423.1	20.6	4.6	69.8	350.1	424.5	20.0	4.5	69.9	635.5
February	351.0	424.4	20.1	4.5	69.9	351.9	424.4	19.0	4.3	69.7	636.1
FEMALES											
February 2005	165.8	328.6	18.4	5.3	54.4	165.0	329.4	17.3	5.0	54.3	638.2
February 2006	171.4	337.6	16.0	4.5	55.0	168.8	335.9	16.9	4.8	54.9	642.9
2007											
February	174.0	345.4	17.6	4.9	55.9	175.9	346.6	16.5	4.6	55.9	649.6
March	174.0	344.3	17.3	4.8	55.6	172.0	341.9	17.1	4.8	55.2	650.2
April	174.1	343.7	16.9	4.7	55.4	173.5	342.0	18.7	5.2	55.4	650.9
May	174.5	344.0	16.7	4.6	55.4	176.9	345.3	16.0	4.4	55.5	651.5
June	175.6	345.3	16.7	4.6	55.5	174.6	345.6	16.5	4.6	55.5	652.2
July	177.4	347.4	16.8	4.6	55.8	175.6	345.4	16.1	4.4	55.4	652.8
August	179.6	349.6	17.1	4.7	56.1	178.6	349.8	17.1	4.7	56.1	653.5
September	181.7	351.2	17.4	4.7	56.3	183.2	351.9	17.5	4.7	56.5	654.2
October	183.3	352.1	17.7	4.8	56.5	184.6	354.9	18.5	4.9	57.0	655.0
November	184.5	352.3	17.8	4.8	56.4	185.9	351.8	18.3	5.0	56.4	655.8
December	185.1	352.2	17.7	4.8	56.3	185.2	353.6	17.3	4.7	56.5	656.6
2008											
January	185.4	351.9	17.6	4.8	56.2	182.8	347.3	16.9	4.6	55.4	657.2
February	185.4	351.4	17.5	4.7	56.1	185.7	353.0	17.8	4.8	56.4	657.8
PERSONS											
February 2005	508.3	733.2	41.9	5.4	61.8	508.0	733.5	41.9	5.4	61.8	1 253.7
February 2006	511.3	742.2	38.6	4.9	61.8	508.2	742.6	38.9	5.0	61.8	1 264.0
2007											
February	516.2	754.2	41.6	5.2	62.3	518.9	756.5	40.4	5.1	62.4	1 277.3
March	516.2	753.4	40.8	5.1	62.1	515.1	747.8	39.9	5.1	61.6	1 278.5
April	516.8	753.7	39.8	5.0	62.0	514.0	752.4	41.2	5.2	62.0	1 279.9
May	517.9	755.2	38.9	4.9	62.0	520.6	759.3	37.4	4.7	62.2	1 281.3
June	519.6	757.5	38.6	4.8	62.1	519.6	757.8	38.6	4.8	62.1	1 282.6
July	522.0	760.5	38.7	4.8	62.2	519.7	755.8	39.3	4.9	61.9	1 283.9
August	524.8	763.7	39.1	4.9	62.5	525.6	767.5	38.2	4.7	62.7	1 285.3
September	527.7	766.6	39.5	4.9	62.6	528.3	765.9	37.5	4.7	62.4	1 286.6
October	530.2	769.2	39.7	4.9	62.8	528.5	768.8	43.7	5.4	63.1	1 288.2
November	532.4	771.5	39.4	4.9	62.9	536.8	773.1	38.9	4.8	63.0	1 289.9
December	534.1	773.4	38.9	4.8	62.9	533.3	774.9	39.6	4.9	63.1	1 291.5
2008											
January	535.5	775.0	38.3	4.7	62.9	532.9	771.8	36.9	4.6	62.6	1 292.7
February	536.4	775.8	37.6	4.6	62.9	537.6	777.4	36.7	4.5	62.9	1 294.0

LABOUR FORCE STATUS (AGED 15 YEARS & OVER)—Western Australia

	TREND					SEASONALLY ADJUSTED					Civilian population aged 15 years and over
	Employed full time	Total employed	Total unemployed	Unemployment rate	Participation rate	Employed full time	Total employed	Total unemployed	Unemployment rate	Participation rate	
	'000	'000	'000	%	%	'000	'000	'000	%	%	
MALES											
February 2005	490.3	572.0	24.1	4.0	74.9	488.8	569.9	23.5	4.0	74.5	796.1
February 2006	513.1	597.3	23.3	3.7	76.5	513.2	595.9	24.6	4.0	76.5	811.3
2007											
February	525.0	608.6	17.3	2.8	75.3	525.2	608.1	17.6	2.8	75.2	831.6
March	525.7	610.6	17.3	2.8	75.3	525.1	611.9	16.2	2.6	75.4	833.4
April	527.2	613.0	17.6	2.8	75.5	526.7	612.3	14.7	2.3	75.1	835.1
May	529.6	615.5	18.2	2.9	75.7	524.1	613.9	18.7	3.0	75.6	836.9
June	532.5	617.8	19.0	3.0	75.9	532.9	619.4	21.9	3.4	76.5	838.6
July	535.5	619.9	19.8	3.1	76.1	543.4	621.8	19.6	3.1	76.3	840.4
August	538.0	621.7	20.4	3.2	76.2	536.3	620.8	19.2	3.0	76.0	842.2
September	539.5	623.4	20.6	3.2	76.3	536.9	622.8	20.0	3.1	76.2	844.0
October	540.6	625.3	20.5	3.2	76.3	542.7	625.4	21.2	3.3	76.4	846.1
November	541.6	627.3	20.2	3.1	76.3	540.3	626.5	21.2	3.3	76.4	848.2
December	543.0	629.6	19.8	3.1	76.4	543.3	629.3	20.2	3.1	76.4	850.3
2008											
January	544.5	631.8	19.3	3.0	76.4	542.3	632.3	18.7	2.9	76.4	852.4
February	546.3	633.8	18.8	2.9	76.5	549.8	635.7	17.5	2.7	76.4	854.6
FEMALES											
February 2005	232.4	447.1	24.8	5.3	58.5	234.1	449.9	23.8	5.0	58.7	806.3
February 2006	239.8	465.5	21.7	4.4	59.5	241.0	463.1	21.7	4.5	59.2	818.9
2007											
February	248.2	481.4	16.6	3.3	59.7	247.7	485.6	17.9	3.6	60.3	834.7
March	249.9	483.1	16.8	3.4	59.8	254.2	485.0	15.7	3.1	59.9	836.2
April	252.1	484.6	17.4	3.5	59.9	249.8	477.5	16.5	3.3	59.0	837.7
May	254.5	486.5	18.1	3.6	60.1	253.6	487.6	18.2	3.6	60.3	839.1
June	257.0	488.9	18.7	3.7	60.4	257.0	486.7	21.2	4.2	60.4	840.5
July	259.1	491.2	19.0	3.7	60.6	259.9	492.4	18.3	3.6	60.6	842.1
August	260.8	492.9	19.0	3.7	60.7	262.4	498.4	17.1	3.3	61.1	843.6
September	262.3	493.9	18.7	3.6	60.6	261.7	493.3	19.9	3.9	60.7	845.2
October	263.7	494.4	18.3	3.6	60.5	264.1	494.3	19.6	3.8	60.7	847.1
November	265.0	495.0	17.9	3.5	60.4	263.1	489.0	16.9	3.3	59.6	848.9
December	266.5	495.9	17.6	3.4	60.4	265.0	496.4	15.1	2.9	60.1	850.8
2008											
January	268.0	497.0	17.4	3.4	60.4	271.7	501.9	20.8	4.0	61.3	852.5
February	269.3	498.0	17.2	3.3	60.4	269.1	497.8	15.7	3.1	60.1	854.3
PERSONS											
February 2005	722.7	1 019.1	49.0	4.6	66.7	722.9	1 019.7	47.3	4.4	66.6	1 602.5
February 2006	752.9	1 062.8	44.9	4.1	67.9	754.2	1 058.9	46.3	4.2	67.8	1 630.3
2007											
February	773.2	1 090.0	33.9	3.0	67.5	772.9	1 093.7	35.5	3.1	67.8	1 666.3
March	775.7	1 093.6	34.1	3.0	67.5	779.3	1 096.8	31.9	2.8	67.6	1 669.6
April	779.3	1 097.5	35.0	3.1	67.7	776.5	1 089.8	31.2	2.8	67.0	1 672.8
May	784.1	1 102.0	36.3	3.2	67.9	777.7	1 101.5	36.9	3.2	67.9	1 676.0
June	789.6	1 106.8	37.6	3.3	68.2	789.9	1 106.1	43.2	3.8	68.4	1 679.2
July	794.6	1 111.1	38.8	3.4	68.3	803.4	1 114.2	37.9	3.3	68.5	1 682.5
August	798.7	1 114.6	39.4	3.4	68.5	798.7	1 119.1	36.4	3.1	68.5	1 685.8
September	801.8	1 117.4	39.3	3.4	68.5	798.6	1 116.2	39.9	3.5	68.4	1 689.1
October	804.3	1 119.6	38.7	3.3	68.4	806.8	1 119.7	40.8	3.5	68.5	1 693.1
November	806.6	1 122.3	38.1	3.3	68.4	803.4	1 115.5	38.1	3.3	68.0	1 697.1
December	809.5	1 125.5	37.5	3.2	68.4	808.3	1 125.7	35.3	3.0	68.3	1 701.0
2008											
January	812.5	1 128.9	36.7	3.2	68.4	814.0	1 134.3	39.5	3.4	68.8	1 705.0
February	815.6	1 131.9	35.9	3.1	68.4	818.9	1 133.6	33.2	2.8	68.3	1 708.9

	TREND					SEASONALLY ADJUSTED					Civilian population aged 15 years and over '000
	Employed full time	Total employed	Total unemployed	Unemployment rate	Participation rate	Employed full time	Total employed	Total unemployed	Unemployment rate	Participation rate	
	'000	'000	'000	%	%	'000	'000	'000	%	%	
MALES											
February 2005	99.5	118.1	7.8	6.2	66.3	99.8	118.4	7.6	6.0	66.4	189.8
February 2006	101.7	122.0	9.4	7.2	68.7	101.6	121.6	9.6	7.3	68.6	191.3
2007											
February	102.0	122.0	7.3	5.7	67.0	101.5	121.9	7.4	5.8	67.0	193.0
March	102.5	122.8	7.0	5.4	67.2	103.7	123.0	6.9	5.3	67.2	193.2
April	103.1	123.6	6.6	5.1	67.4	102.5	123.4	7.3	5.6	67.6	193.3
May	103.6	124.3	6.3	4.8	67.5	103.1	124.8	6.2	4.7	67.7	193.4
June	104.1	124.8	6.1	4.7	67.7	104.3	124.4	5.6	4.3	67.2	193.5
July	104.6	125.2	6.1	4.6	67.8	104.9	125.5	5.6	4.3	67.8	193.6
August	105.0	125.4	6.2	4.7	67.9	104.8	125.7	6.4	4.9	68.2	193.7
September	105.3	125.5	6.2	4.7	67.9	106.1	124.9	6.5	4.9	67.8	193.9
October	105.6	125.6	6.3	4.7	68.0	105.1	125.7	6.9	5.2	68.3	194.0
November	105.8	125.7	6.2	4.7	67.9	105.3	125.9	5.7	4.3	67.8	194.2
December	106.1	125.9	6.0	4.5	67.9	106.5	125.3	6.1	4.6	67.6	194.3
2008											
January	106.5	126.1	5.8	4.4	67.8	106.2	126.7	5.6	4.3	68.0	194.5
February	106.8	126.2	5.6	4.2	67.7	107.4	126.2	5.5	4.2	67.6	194.7
FEMALES											
February 2005	48.7	98.8	6.0	5.8	52.7	48.5	99.3	5.8	5.5	52.8	198.9
February 2006	49.5	101.8	6.7	6.2	54.2	49.2	102.1	6.9	6.3	54.4	200.2
2007											
February	52.2	102.5	5.6	5.2	53.5	52.2	101.7	5.6	5.2	53.1	202.0
March	51.7	102.2	5.6	5.2	53.3	51.4	102.0	5.9	5.5	53.4	202.2
April	51.2	101.8	5.6	5.2	53.1	50.9	102.0	5.5	5.1	53.2	202.3
May	51.0	101.7	5.7	5.3	53.1	51.1	102.2	4.2	4.0	52.6	202.4
June	50.9	101.8	5.8	5.4	53.1	51.1	100.8	6.9	6.4	53.2	202.5
July	50.9	102.1	6.0	5.5	53.3	50.5	102.1	6.4	5.9	53.6	202.6
August	51.1	102.6	6.2	5.7	53.6	51.2	102.1	6.3	5.8	53.4	202.8
September	51.3	103.1	6.3	5.8	53.9	51.7	104.5	5.3	4.8	54.1	202.9
October	51.5	103.5	6.5	5.9	54.2	50.7	102.8	6.8	6.2	54.0	203.1
November	51.9	103.9	6.6	5.9	54.3	52.5	104.2	6.9	6.2	54.6	203.2
December	52.3	104.1	6.7	6.0	54.5	52.2	104.2	6.9	6.2	54.6	203.4
2008											
January	52.6	104.2	6.8	6.1	54.5	51.8	104.3	6.5	5.9	54.5	203.5
February	53.0	104.2	6.9	6.2	54.6	53.9	103.8	6.9	6.2	54.3	203.6
PERSONS											
February 2005	148.1	216.8	13.8	6.0	59.3	148.3	217.7	13.3	5.8	59.5	388.6
February 2006	151.2	223.8	16.1	6.7	61.3	150.8	223.7	16.4	6.8	61.3	391.5
2007											
February	154.2	224.6	13.0	5.5	60.1	153.6	223.6	13.0	5.5	59.9	395.1
March	154.2	225.0	12.6	5.3	60.1	155.1	225.0	12.8	5.4	60.2	395.3
April	154.3	225.5	12.2	5.1	60.1	153.4	225.5	12.8	5.4	60.2	395.5
May	154.6	226.0	12.0	5.0	60.1	154.2	227.1	10.4	4.4	60.0	395.8
June	155.0	226.6	11.9	5.0	60.2	155.5	225.2	12.5	5.3	60.0	396.0
July	155.5	227.3	12.1	5.0	60.4	155.4	227.7	12.0	5.0	60.5	396.2
August	156.1	228.0	12.3	5.1	60.6	156.0	227.8	12.7	5.3	60.7	396.5
September	156.6	228.6	12.6	5.2	60.8	157.8	229.4	11.7	4.9	60.8	396.8
October	157.1	229.2	12.7	5.3	60.9	155.8	228.5	13.6	5.6	61.0	397.1
November	157.7	229.6	12.7	5.2	61.0	157.7	230.0	12.6	5.2	61.1	397.4
December	158.4	230.0	12.7	5.2	61.0	158.7	229.5	13.0	5.4	61.0	397.7
2008											
January	159.1	230.2	12.6	5.2	61.0	158.0	231.0	12.1	5.0	61.1	398.0
February	159.7	230.4	12.5	5.1	61.0	161.3	229.9	12.3	5.1	60.8	398.3

	TREND					<i>Civilian population aged 15 years and over</i>
	<i>Employed full time</i>	<i>Total employed</i>	<i>Total unemployed</i>	<i>Unemployment rate</i>	<i>Participation rate</i>	
	'000	'000	'000	%	%	
MALES						
February 2005	43.7	51.7	3.5	6.3	73.4	75.2
February 2006	45.0	53.1	3.7	6.5	73.6	77.2
2007						
February	49.2	57.3	2.2	3.7	74.6	79.7
March	49.4	57.5	2.6	4.3	75.2	79.9
April	49.8	57.9	3.0	4.8	75.9	80.1
May	50.3	58.3	3.1	5.1	76.5	80.4
June	50.9	58.9	3.1	5.0	77.0	80.6
July	51.5	59.4	3.0	4.8	77.3	80.7
August	51.9	59.8	2.9	4.6	77.5	80.9
September	52.1	60.0	2.9	4.5	77.6	81.0
October	52.1	60.0	2.9	4.6	77.5	81.1
November	52.0	59.9	3.0	4.8	77.4	81.3
December	51.9	59.8	3.1	5.0	77.3	81.4
2008						
January	51.8	59.8	3.2	5.0	77.2	81.6
February	51.8	59.8	3.2	5.1	77.1	81.9
FEMALES						
February 2005	30.0	43.6	1.9	4.2	64.7	70.3
February 2006	31.6	44.7	2.6	5.5	65.6	72.1
2007						
February	33.5	46.1	1.5	3.1	65.0	73.1
March	33.4	46.1	1.6	3.4	65.2	73.2
April	33.4	46.4	1.8	3.7	65.6	73.4
May	33.6	46.7	1.8	3.8	66.0	73.5
June	33.9	47.1	1.9	3.9	66.6	73.7
July	34.2	47.5	2.1	4.1	67.2	73.8
August	34.4	47.9	2.3	4.5	67.9	74.0
September	34.4	48.2	2.5	4.9	68.4	74.1
October	34.4	48.4	2.6	5.2	68.7	74.3
November	34.4	48.7	2.7	5.2	68.9	74.5
December	34.5	48.9	2.6	5.1	69.0	74.7
2008						
January	34.6	49.0	2.6	5.0	68.9	74.9
February	34.7	49.1	2.4	4.7	68.7	75.1
PERSONS						
February 2005	73.7	95.3	5.4	5.3	69.2	145.5
February 2006	76.6	97.8	6.3	6.0	69.7	149.3
2007						
February	82.7	103.4	3.7	3.5	70.0	152.9
March	82.8	103.7	4.3	3.9	70.5	153.1
April	83.2	104.2	4.7	4.3	71.0	153.5
May	83.9	105.0	5.0	4.5	71.5	153.9
June	84.8	106.0	5.0	4.5	72.0	154.2
July	85.7	107.0	5.0	4.5	72.5	154.5
August	86.3	107.8	5.1	4.5	72.9	154.8
September	86.5	108.2	5.3	4.7	73.2	155.1
October	86.5	108.4	5.6	4.9	73.3	155.5
November	86.4	108.6	5.7	5.0	73.4	155.8
December	86.4	108.7	5.8	5.0	73.3	156.1
2008						
January	86.4	108.9	5.7	5.0	73.2	156.5
February	86.5	108.9	5.6	4.9	73.1	157.0

	TREND					<i>Civilian population aged 15 years and over</i>
	<i>Employed full time</i>	<i>Total employed</i>	<i>Total unemployed</i>	<i>Unemployment rate</i>	<i>Participation rate</i>	
	'000	'000	'000	%	%	
MALES						
February 2005	79.2	93.2	3.8	3.9	77.4	125.3
February 2006	80.0	94.5	3.3	3.4	77.2	126.7
2007						
February	83.3	98.0	3.2	3.1	78.5	128.8
March	83.4	98.3	3.2	3.1	78.6	129.1
April	83.6	98.6	3.2	3.1	78.8	129.2
May	83.8	98.8	3.1	3.0	78.8	129.4
June	84.0	99.0	2.9	2.9	78.7	129.5
July	84.3	99.2	2.8	2.7	78.6	129.8
August	84.5	99.4	2.7	2.6	78.5	130.1
September	84.8	99.5	2.6	2.5	78.3	130.3
October	84.9	99.5	2.6	2.5	78.1	130.6
November	85.0	99.5	2.6	2.5	77.9	131.0
December	85.0	99.5	2.6	2.5	77.7	131.3
2008						
January	84.9	99.4	2.6	2.5	77.5	131.6
February	84.8	99.4	2.6	2.5	77.4	131.9
FEMALES						
February 2005	54.2	88.0	2.5	2.7	68.3	132.5
February 2006	55.1	86.1	2.9	3.3	66.7	133.6
2007						
February	58.7	90.0	2.7	2.9	68.5	135.3
March	58.4	89.6	2.7	2.9	68.1	135.5
April	58.1	89.3	2.7	2.9	67.8	135.6
May	57.9	89.1	2.7	2.9	67.7	135.7
June	57.8	89.0	2.7	2.9	67.5	135.8
July	57.8	88.8	2.6	2.9	67.2	136.0
August	57.9	88.6	2.5	2.8	66.9	136.3
September	58.0	88.6	2.4	2.6	66.6	136.6
October	58.3	88.7	2.3	2.5	66.5	136.8
November	58.7	89.1	2.2	2.4	66.6	137.1
December	59.1	89.6	2.1	2.3	66.8	137.4
2008						
January	59.5	90.2	2.1	2.3	67.1	137.7
February	59.9	90.8	2.1	2.3	67.4	137.9
PERSONS						
February 2005	133.4	181.2	6.2	3.3	72.7	257.8
February 2006	135.1	180.7	6.2	3.3	71.8	260.3
2007						
February	142.0	187.9	5.9	3.0	73.4	264.1
March	141.8	187.9	5.9	3.0	73.3	264.5
April	141.7	187.9	5.8	3.0	73.2	264.8
May	141.7	188.0	5.7	3.0	73.1	265.1
June	141.8	188.1	5.6	2.9	73.0	265.3
July	142.1	188.1	5.4	2.8	72.8	265.8
August	142.4	188.1	5.2	2.7	72.6	266.4
September	142.8	188.1	5.0	2.6	72.3	266.9
October	143.2	188.2	4.8	2.5	72.2	267.5
November	143.6	188.6	4.8	2.5	72.1	268.1
December	144.0	189.0	4.7	2.4	72.1	268.7
2008						
January	144.3	189.6	4.7	2.4	72.2	269.2
February	144.7	190.1	4.7	2.4	72.3	269.8

Original—February 2008

	EMPLOYED			UNEMPLOYED		Labour force	Not in labour force	Civilian population aged 15 years and over	UNEMPLOYMENT RATE		Participation rate
	Full time	Part time	Total	Looking for f/t work	Total				Looking for f/t work	Total	
	'000	'000	'000	'000	'000				'000	'000	
MALES											
New South Wales	1 599.3	278.3	1 877.7	68.2	85.4	1 963.0	805.2	2 768.2	4.1	4.3	70.9
Victoria	1 224.8	227.2	1 452.0	39.8	59.1	1 511.1	565.4	2 076.5	3.1	3.9	72.8
Queensland	1 015.7	167.0	1 182.6	36.0	44.9	1 227.5	436.8	1 664.3	3.4	3.7	73.8
South Australia	354.0	71.5	425.6	15.8	20.9	446.4	189.7	636.1	4.3	4.7	70.2
Western Australia	553.5	83.1	636.6	13.6	18.9	655.5	199.1	854.6	2.4	2.9	76.7
Tasmania	109.0	17.0	126.0	4.7	5.7	131.7	62.9	194.7	4.1	4.3	67.7
Northern Territory	50.9	7.8	58.7	2.0	3.5	62.2	19.7	81.9	3.9	5.7	76.0
Australian Capital Territory	84.5	14.4	98.8	2.3	3.4	102.3	29.6	131.9	2.7	3.3	77.5
Australia	4 991.7	866.3	5 858.0	182.5	241.8	6 099.9	2 308.5	8 408.3	3.5	4.0	72.5
FEMALES											
New South Wales	872.9	650.2	1 523.2	53.1	85.8	1 609.0	1 241.2	2 850.2	5.7	5.3	56.5
Victoria	659.6	530.8	1 190.3	37.1	69.4	1 259.8	905.2	2 165.0	5.3	5.5	58.2
Queensland	547.6	421.3	968.9	32.9	51.3	1 020.2	668.5	1 688.7	5.7	5.0	60.4
South Australia	186.2	165.8	352.0	10.3	20.2	372.2	285.6	657.8	5.2	5.4	56.6
Western Australia	270.4	224.3	494.7	8.6	18.0	512.7	341.6	854.3	3.1	3.5	60.0
Tasmania	54.4	47.4	101.7	5.2	7.8	109.5	94.1	203.6	8.8	7.1	53.8
Northern Territory	34.2	12.4	46.6	*1.1	2.5	49.2	25.9	75.1	*3.0	5.2	65.5
Australian Capital Territory	60.6	30.2	90.9	*1.5	2.8	93.6	44.3	137.9	*2.4	3.0	67.9
Australia	2 686.0	2 082.3	4 768.4	149.8	257.8	5 026.2	3 606.4	8 632.6	5.3	5.1	58.2
PERSONS											
New South Wales	2 472.3	928.5	3 400.8	121.3	171.2	3 572.0	2 046.5	5 618.4	4.7	4.8	63.6
Victoria	1 884.3	758.0	2 642.3	76.9	128.6	2 770.9	1 470.6	4 241.5	3.9	4.6	65.3
Queensland	1 563.3	588.3	2 151.6	68.9	96.2	2 247.8	1 105.3	3 353.0	4.2	4.3	67.0
South Australia	540.3	237.3	777.6	26.1	41.1	818.6	475.3	1 294.0	4.6	5.0	63.3
Western Australia	824.0	307.3	1 131.3	22.3	36.9	1 168.2	540.8	1 708.9	2.6	3.2	68.4
Tasmania	163.4	64.4	227.8	9.9	13.5	241.3	157.0	398.3	5.7	5.6	60.6
Northern Territory	85.2	20.2	105.3	3.1	6.1	111.4	45.6	157.0	3.5	5.5	71.0
Australian Capital Territory	145.1	44.6	189.7	3.8	6.2	195.9	73.9	269.8	2.6	3.2	72.6
Australia	7 677.8	2 948.6	10 626.4	332.3	499.6	11 126.0	5 914.9	17 040.9	4.1	4.5	65.3

* estimate is subject to sampling variability too high for most practical purposes

	EMPLOYED		UNEMPLOYED		UNEMPLOYMENT RATE		Participation rate	Employment to population ratio	Unemployment to population ratio – looking for full-time work
	Full time	Total	Looking for f/t work	Total	Looking for f/t work	Total			
	'000	'000	'000	'000	%	%			
MALES									
February 2005	159.8	360.3	35.3	65.8	18.1	15.4	59.7	50.5	4.9
February 2006	157.6	350.1	35.4	68.0	18.3	16.3	58.3	48.9	4.9
2007									
February	154.8	361.3	31.5	57.9	16.9	13.8	57.8	49.8	4.3
March	156.6	362.3	31.2	57.4	16.6	13.7	57.8	49.9	4.3
April	158.9	363.5	31.0	57.2	16.3	13.6	57.9	50.0	4.3
May	161.1	364.3	31.0	57.0	16.1	13.5	57.9	50.1	4.3
June	162.7	364.3	31.1	57.3	16.1	13.6	57.9	50.0	4.3
July	163.3	363.5	31.5	58.4	16.1	13.8	57.9	49.9	4.3
August	163.6	362.7	32.1	59.9	16.4	14.2	57.9	49.7	4.4
September	164.3	363.3	32.6	61.1	16.5	14.4	58.1	49.7	4.5
October	165.8	366.0	32.8	61.4	16.5	14.3	58.4	50.1	4.5
November	167.8	370.2	32.6	60.8	16.3	14.1	58.9	50.6	4.5
December	170.1	375.1	32.1	59.5	15.9	13.7	59.3	51.1	4.4
2008									
January	172.3	379.9	31.3	57.9	15.4	13.2	59.6	51.7	4.3
February	174.4	384.6	30.3	55.8	14.8	12.7	59.9	52.3	4.1
FEMALES									
February 2005	86.0	359.4	26.3	58.1	23.4	13.9	61.0	52.6	3.8
February 2006	82.5	357.0	24.5	58.1	22.9	14.0	60.6	52.1	3.6
2007									
February	85.2	362.8	25.3	58.2	22.9	13.8	60.8	52.4	3.6
March	85.6	365.6	24.5	57.8	22.2	13.6	61.1	52.7	3.5
April	85.9	367.8	23.7	56.8	21.6	13.4	61.2	53.0	3.4
May	86.2	368.8	23.0	55.7	21.1	13.1	61.1	53.1	3.3
June	86.3	368.5	22.6	55.2	20.8	13.0	60.9	53.0	3.2
July	86.4	367.4	22.5	55.4	20.6	13.1	60.7	52.7	3.2
August	86.9	366.5	22.6	56.2	20.6	13.3	60.6	52.5	3.2
September	87.9	366.5	22.9	57.2	20.6	13.5	60.7	52.5	3.3
October	89.0	367.5	23.1	57.9	20.6	13.6	60.8	52.6	3.3
November	90.1	368.9	23.3	58.1	20.5	13.6	61.0	52.7	3.3
December	91.0	370.2	23.3	57.7	20.4	13.5	61.0	52.8	3.3
2008									
January	91.8	371.1	23.3	57.0	20.2	13.3	61.0	52.9	3.3
February	92.1	371.6	23.2	56.2	20.1	13.1	60.9	52.9	3.3
PERSONS									
February 2005	245.8	719.8	61.6	123.9	20.0	14.7	60.4	51.5	4.4
February 2006	240.1	707.1	59.9	126.1	20.0	15.1	59.4	50.4	4.3
2007									
February	240.0	724.1	56.7	116.1	19.1	13.8	59.3	51.1	4.0
March	242.2	727.9	55.6	115.2	18.7	13.7	59.4	51.3	3.9
April	244.8	731.3	54.7	114.0	18.3	13.5	59.5	51.5	3.9
May	247.3	733.1	54.0	112.7	17.9	13.3	59.4	51.5	3.8
June	248.9	732.8	53.7	112.5	17.7	13.3	59.4	51.5	3.8
July	249.8	730.9	53.9	113.8	17.8	13.5	59.2	51.3	3.8
August	250.5	729.2	54.7	116.1	17.9	13.7	59.2	51.1	3.8
September	252.1	729.8	55.4	118.3	18.0	13.9	59.4	51.1	3.9
October	254.8	733.5	55.9	119.3	18.0	14.0	59.6	51.3	3.9
November	258.0	739.1	55.9	118.9	17.8	13.9	59.9	51.6	3.9
December	261.1	745.2	55.4	117.3	17.5	13.6	60.1	51.9	3.9
2008									
January	264.1	751.0	54.5	114.9	17.1	13.3	60.3	52.3	3.8
February	266.6	756.2	53.5	112.0	16.7	12.9	60.4	52.6	3.7

	EMPLOYED		UNEMPLOYED		UNEMPLOYMENT RATE		Participation rate	Employment to population ratio	Unemployment to population ratio – looking for full-time work
	Full time	Total	Looking for f/t work	Total	Looking for f/t work	Total			
	'000	'000	'000	'000	%	%			
MALES									
February 2005	160.2	361.2	35.6	67.6	18.2	15.8	60.1	50.6	5.0
February 2006	158.6	356.0	34.1	65.8	17.7	15.6	58.9	49.7	4.8
2007									
February	149.4	355.0	32.4	60.4	17.8	14.5	57.3	49.0	4.5
March	156.8	363.0	29.3	56.6	15.8	13.5	57.8	50.0	4.0
April	164.0	367.9	30.4	54.6	15.6	12.9	58.1	50.6	4.2
May	163.2	366.8	30.8	58.6	15.9	13.8	58.4	50.4	4.2
June	158.2	359.4	32.9	57.1	17.2	13.7	57.2	49.3	4.5
July	165.0	367.8	31.5	56.3	16.0	13.3	58.2	50.5	4.3
August	165.9	363.3	32.5	64.8	16.4	15.1	58.7	49.8	4.5
September	161.1	359.0	28.5	54.2	15.0	13.1	56.6	49.2	3.9
October	167.0	366.9	34.0	63.1	16.9	14.7	58.8	50.2	4.7
November	165.3	365.6	35.8	67.1	17.8	15.5	59.1	49.9	4.9
December	168.8	372.4	33.1	60.9	16.4	14.0	59.1	50.8	4.5
2008									
January	176.5	389.2	30.3	53.2	14.7	12.0	60.2	53.0	4.1
February	175.1	385.7	27.1	53.5	13.4	12.2	59.6	52.4	3.7
FEMALES									
February 2005	85.0	362.5	27.3	56.5	24.3	13.5	61.3	53.0	4.0
February 2006	84.7	359.2	24.4	57.3	22.4	13.8	60.8	52.4	3.6
2007									
February	85.2	361.5	25.2	60.6	22.8	14.3	61.0	52.2	3.6
March	86.4	364.8	24.8	56.7	22.3	13.4	60.8	52.6	3.6
April	87.3	371.4	21.9	56.4	20.1	13.2	61.6	53.5	3.2
May	86.4	372.5	24.1	56.4	21.8	13.2	61.7	53.6	3.5
June	86.8	370.3	21.2	52.9	19.6	12.5	60.8	53.2	3.0
July	82.4	362.0	24.0	56.6	22.5	13.5	60.1	52.0	3.4
August	88.4	365.5	22.7	56.6	20.4	13.4	60.5	52.4	3.3
September	90.0	367.0	22.6	54.3	20.1	12.9	60.4	52.6	3.2
October	87.3	368.2	19.8	57.5	18.5	13.5	60.9	52.7	2.8
November	89.3	365.9	27.8	64.9	23.7	15.1	61.5	52.3	4.0
December	92.3	373.0	23.0	55.4	20.0	12.9	61.1	53.2	3.3
2008									
January	93.0	373.5	22.4	57.0	19.4	13.2	61.3	53.2	3.2
February	91.2	368.9	22.6	53.2	19.8	12.6	60.0	52.5	3.2
PERSONS									
February 2005	245.2	723.7	62.8	124.1	20.4	14.6	60.7	51.8	4.5
February 2006	243.3	715.2	58.6	123.2	19.4	14.7	59.8	51.0	4.2
2007									
February	234.6	716.5	57.6	121.0	19.7	14.4	59.1	50.5	4.1
March	243.1	727.8	54.1	113.3	18.2	13.5	59.2	51.3	3.8
April	251.3	739.3	52.3	111.0	17.2	13.1	59.8	52.0	3.7
May	249.5	739.3	54.9	115.0	18.0	13.5	60.0	52.0	3.9
June	245.1	729.7	54.1	110.0	18.1	13.1	58.9	51.2	3.8
July	247.5	729.8	55.5	112.9	18.3	13.4	59.1	51.2	3.9
August	254.3	728.9	55.2	121.4	17.8	14.3	59.6	51.1	3.9
September	251.1	726.0	51.1	108.5	16.9	13.0	58.4	50.8	3.6
October	254.3	735.1	53.8	120.6	17.5	14.1	59.8	51.4	3.8
November	254.5	731.6	63.5	132.0	20.0	15.3	60.3	51.1	4.4
December	261.1	745.4	56.2	116.3	17.7	13.5	60.1	52.0	3.9
2008									
January	269.5	762.7	52.7	110.2	16.4	12.6	60.8	53.1	3.7
February	266.3	754.5	49.7	106.7	15.7	12.4	59.8	52.4	3.5

	EMPLOYED			UNEMPLOYED			Civilian population aged 15–19 years	UNEMPLOYMENT RATE		Participation rate	Unemployment to population ratio – looking for full-time work	
	Full time	Part time	Total	Looking for f/t work	Total	Labour force		Looking for f/t work	Total			
	'000	'000	'000	'000	'000	'000		'000	'000			%
NOT ATTENDING FULL-TIME EDUCATION												
Males												
February 2005	155.8	46.0	201.8	32.5	35.6	237.4	26.3	263.7	17.3	15.0	90.0	12.3
February 2006	152.6	46.3	198.9	30.9	35.1	233.9	30.3	264.3	16.8	15.0	88.5	11.7
February 2007	147.3	49.7	197.0	31.1	34.0	231.0	29.4	260.3	17.4	14.7	88.7	11.9
February 2008	169.1	46.8	215.8	25.9	29.3	245.1	34.0	279.1	13.3	11.9	87.8	9.3
Females												
February 2005	77.1	65.7	142.8	25.0	28.4	171.2	31.5	202.7	24.5	16.6	84.5	12.3
February 2006	74.1	68.8	142.9	24.0	26.2	169.0	33.0	202.0	24.5	15.5	83.7	11.9
February 2007	75.6	62.8	138.4	22.9	28.1	166.5	33.7	200.2	23.2	16.9	83.2	11.4
February 2008	79.1	63.9	143.0	22.1	24.8	167.8	38.0	205.9	21.8	14.8	81.5	10.7
Persons												
February 2005	232.9	111.7	344.6	57.5	64.0	408.6	57.8	466.4	19.8	15.7	87.6	12.3
February 2006	226.7	115.1	341.7	54.9	61.2	403.0	63.3	466.3	19.5	15.2	86.4	11.8
February 2007	222.9	112.5	335.3	53.9	62.1	397.4	63.1	460.5	19.5	15.6	86.3	11.7
February 2008	248.2	110.7	358.8	48.0	54.1	412.9	72.0	485.0	16.2	13.1	85.1	9.9
ATTENDING FULL-TIME EDUCATION												
Males												
February 2005	13.3	150.8	164.1	8.4	41.6	205.7	243.8	449.5	38.7	20.2	45.8	1.9
February 2006	15.3	147.0	162.2	7.9	39.4	201.6	250.9	452.4	34.1	19.5	44.6	1.7
February 2007	11.0	152.7	163.8	5.4	33.5	197.3	267.5	464.8	32.9	17.0	42.4	1.2
February 2008	16.4	159.8	176.2	*4.5	30.2	206.5	250.7	457.1	*21.4	14.6	45.2	*1.0
Females												
February 2005	11.8	209.9	221.7	7.6	34.9	256.6	224.5	481.2	39.2	13.6	53.3	1.6
February 2006	14.4	202.8	217.2	5.5	38.0	255.2	227.7	482.9	27.6	14.9	52.8	1.1
February 2007	13.6	209.6	223.2	7.5	39.4	262.6	229.7	492.3	35.7	15.0	53.3	1.5
February 2008	16.4	208.8	225.2	5.0	34.6	259.8	237.4	497.2	23.5	13.3	52.3	1.0
Persons												
February 2005	25.1	360.7	385.8	16.0	76.5	462.3	468.3	930.7	38.9	16.6	49.7	1.7
February 2006	29.7	349.7	379.4	13.4	77.4	456.7	478.6	935.3	31.1	16.9	48.8	1.4
February 2007	24.6	362.3	386.9	12.9	72.9	459.9	497.2	957.1	34.5	15.9	48.0	1.4
February 2008	32.8	368.7	401.5	9.5	64.8	466.3	488.1	954.4	22.5	13.9	48.9	1.0
TOTAL												
Males												
February 2005	169.1	196.8	365.9	40.9	77.2	443.1	270.1	713.2	19.5	17.4	62.1	5.7
February 2006	167.9	193.2	361.1	38.8	74.4	435.5	281.2	716.7	18.8	17.1	60.8	5.4
February 2007	158.4	202.4	360.7	36.5	67.5	428.2	296.9	725.1	18.7	15.8	59.1	5.0
February 2008	185.5	206.6	392.1	30.4	59.5	451.6	284.7	736.3	14.1	13.2	61.3	4.1
Females												
February 2005	88.8	275.6	364.4	32.6	63.4	427.8	256.0	683.9	26.8	14.8	62.6	4.8
February 2006	88.5	271.6	360.0	29.5	64.2	424.2	260.7	684.9	25.0	15.1	61.9	4.3
February 2007	89.1	272.4	361.5	30.4	67.5	429.1	263.4	692.5	25.4	15.7	62.0	4.4
February 2008	95.5	272.8	368.2	27.1	59.4	427.7	275.4	703.1	22.1	13.9	60.8	3.9
Persons												
February 2005	257.9	472.4	730.4	73.5	140.5	870.9	526.1	1 397.0	22.2	16.1	62.3	5.3
February 2006	256.3	464.8	721.1	68.2	138.6	859.7	541.9	1 401.6	21.0	16.1	61.3	4.9
February 2007	247.5	474.8	722.3	66.9	135.0	857.3	560.3	1 417.6	21.3	15.8	60.5	4.7
February 2008	281.0	479.3	760.3	57.6	118.9	879.2	560.1	1 439.4	17.0	13.5	61.1	4.0

* estimate is subject to sampling variability too high for most practical purposes

	EMPLOYED			UNEMPLOYED		Labour force	Not in labour force	Civilian population aged 15–19 years	UNEMPLOYMENT RATE		Participation rate	Unemployment to population ratio – looking for full-time work
	Full time	Part time	Total	Looking for f/t work	Total				Looking for f/t work	Total		
	'000	'000	'000	'000	'000				'000	'000		
NOT ATTENDING FULL-TIME EDUCATION												
New South Wales	79.6	37.1	116.7	17.8	18.7	135.4	25.6	161.0	18.3	13.8	84.1	11.1
Victoria	42.3	22.9	65.2	8.5	10.3	75.5	13.3	88.7	16.7	13.6	85.1	9.6
Queensland	60.6	29.5	90.1	12.0	14.2	104.3	14.7	118.9	16.5	13.6	87.7	10.0
South Australia	16.0	9.1	25.1	3.8	4.3	29.4	4.7	34.1	19.0	14.7	86.3	11.0
Western Australia	36.1	7.3	43.4	*3.3	*3.5	47.0	8.4	55.4	*8.5	*7.5	84.8	*6.1
Tasmania	6.8	1.6	8.4	*1.3	*1.5	10.0	2.4	12.3	*16.0	*15.5	80.8	*10.6
Northern Territory	3.0	1.6	4.6	*1.0	*1.1	5.7	2.1	7.8	*25.6	*19.4	73.3	*13.1
Australian Capital Territory	3.7	1.5	5.2	*0.4	*0.5	5.7	*1.0	6.7	*9.0	*8.3	84.9	*5.5
Australia	248.2	110.7	358.8	48.0	54.1	412.9	72.0	485.0	16.2	13.1	85.1	9.9
ATTENDING FULL-TIME EDUCATION												
New South Wales	7.4	103.5	110.8	*3.8	21.3	132.1	174.3	306.4	*33.8	16.1	43.1	*1.2
Victoria	7.9	99.9	107.8	*2.0	19.3	127.1	132.7	259.7	*20.6	15.2	48.9	*0.8
Queensland	7.5	82.8	90.3	*1.2	10.4	100.7	75.7	176.4	*13.8	10.4	57.1	*0.7
South Australia	2.6	26.3	28.9	*1.6	6.6	35.4	35.6	71.1	*38.8	18.6	49.9	*2.3
Western Australia	4.9	40.5	45.4	*0.5	3.8	49.2	45.2	94.4	*9.1	7.8	52.1	*0.5
Tasmania	*1.1	7.5	8.6	*0.3	*1.6	10.3	11.6	21.8	*20.0	*15.8	47.0	*1.3
Northern Territory	*0.2	1.9	2.1	*0.1	*0.6	2.7	5.0	7.7	*31.2	*20.6	34.9	*1.4
Australian Capital Territory	1.3	6.3	7.6	—	*1.3	8.8	8.0	16.8	—	*14.2	52.4	—
Australia	32.8	368.7	401.5	9.5	64.8	466.3	488.1	954.4	22.5	13.9	48.9	1.0
TOTAL												
New South Wales	87.0	140.5	227.6	21.6	40.0	267.5	199.9	467.4	19.9	14.9	57.2	4.6
Victoria	50.2	122.8	173.0	10.5	29.5	202.5	145.9	348.5	17.3	14.6	58.1	3.0
Queensland	68.1	112.3	180.4	13.2	24.6	205.0	90.3	295.3	16.2	12.0	69.4	4.5
South Australia	18.6	35.4	54.0	5.4	10.9	64.9	40.3	105.2	22.5	16.8	61.7	5.1
Western Australia	41.0	47.8	88.8	3.8	7.3	96.2	53.6	149.8	8.6	7.6	64.2	2.6
Tasmania	7.9	9.1	17.0	*1.6	3.2	20.2	13.9	34.2	*16.6	15.7	59.2	*4.6
Northern Territory	3.2	3.5	6.8	*1.1	1.7	8.4	7.1	15.5	*26.1	19.8	54.3	*7.3
Australian Capital Territory	5.0	7.8	12.8	*0.4	*1.7	14.5	9.0	23.5	*6.9	*11.9	61.7	*1.6
Australia	281.0	479.3	760.3	57.6	118.9	879.2	560.1	1 439.4	17.0	13.5	61.1	4.0

* estimate is subject to sampling variability too high for most practical purposes

— nil or rounded to zero (including null cells)

WHAT IF...? REVISIONS TO TREND ESTIMATES

EFFECT OF NEW SEASONALLY ADJUSTED ESTIMATES ON TREND ESTIMATES

TREND REVISIONS

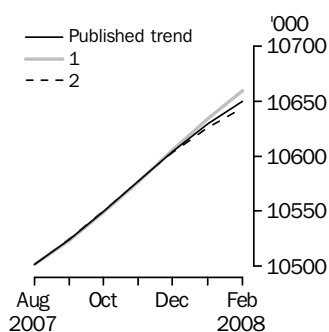
Each time new seasonally adjusted estimates become available, trend estimates are revised. This revision is a combined result of the concurrent seasonal adjustment process and the application of surrogates of the Henderson average to the seasonally adjusted series (see paragraphs 25 to 33 of the Explanatory Notes).

The examples in the tables below show two illustrative scenarios and the consequent revisions to previous trend estimates of employment and the unemployment rate. The revisions in the scenarios below are only due to the use of surrogates of the Henderson average, as the impact of revision of the seasonally adjusted estimates can not be estimated in advance.

- (1) The March seasonally adjusted estimate is *higher* than the February estimate by:
 - 0.26% for employment
 - 1.80% for the unemployment rate
- (2) The March seasonally adjusted estimate is *lower* than the February estimate by:
 - 0.26% for employment
 - 1.80% for the unemployment rate

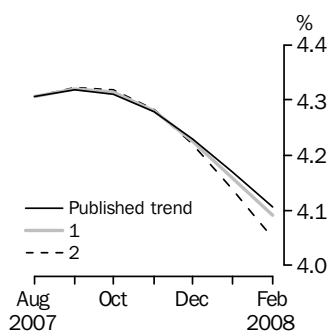
The percentage changes of 0.26% and 1.80% were chosen because they represent the average absolute monthly percentage changes in employment and the unemployment rate respectively.

EMPLOYMENT



	Trend as published	WHAT IF NEXT MONTH'S SEASONALLY ADJUSTED ESTIMATE IS:	
		(1) 10 693.3 i.e. rises by 0.26%	(2) 10 637.8 i.e. falls by 0.26%
2007			
November	10 576.9	10 576.4	10 577.3
December	10 604.0	10 605.3	10 602.9
2008			
January	10 629.1	10 633.6	10 625.3
February	10 649.7	10 659.2	10 643.7

UNEMPLOYMENT RATE



	Trend as published	WHAT IF NEXT MONTH'S SEASONALLY ADJUSTED ESTIMATE IS:	
		(1) 4.0 i.e. rises by 1.80%	(2) 3.9 i.e. falls by 1.80%
2007			
November	4.3	4.3	4.3
December	4.2	4.2	4.2
2008			
January	4.2	4.2	4.1
February	4.1	4.1	4.1

EXPLANATORY NOTES

INTRODUCTION

1 This publication contains estimates of the civilian labour force derived from the Labour Force Survey component of the Monthly Population Survey. The full time series for estimates from this publication are also available electronically – see *Labour Force, Australia, Spreadsheets* (cat. no. 6202.0.55.001). More detailed estimates are released one week after this publication in various electronic formats – see *Labour Force, Australia, Detailed – Electronic Delivery* (cat. no. 6291.0.55.001) and *Labour Force, Australia, Detailed, Quarterly* (cat. no. 6291.0.55.003).

CONCEPTS, SOURCES AND METHODS

2 The conceptual framework used in Australia's Labour Force Survey aligns closely with the standards and guidelines set out in Resolutions of International Conferences of Labour Statisticians. Descriptions of the underlying concepts and structure of Australia's labour force statistics, and the sources and methods used in compiling the estimates, are presented in *Labour Statistics: Concepts, Sources and Methods* (cat. no. 6102.0.55.001) which is available on the ABS website <<http://www.abs.gov.au>> (Methods, Classifications, Concepts & Standards).

LABOUR FORCE SURVEY

3 The Labour Force Survey is based on a multi-stage area sample of private dwellings (currently about 30,000 houses, flats, etc.) and a list sample of non-private dwellings (hotels, motels, etc.), and covers about 0.45% of the population of Australia. Information is obtained from the occupants of selected dwellings by specially trained interviewers.

4 The information is collected using computer-assisted interviewing (CAI), whereby responses are recorded directly onto an electronic questionnaire on a notebook computer. The CAI method was progressively implemented from October 2003 to August 2004, replacing the 'pen and paper' method previously used.

5 Households selected for the Labour Force Survey are interviewed each month for eight months, with one-eighth of the sample being replaced each month. The first interview is conducted face-to-face. Subsequent interviews are conducted by telephone (if acceptable to the respondent).

6 The interviews are generally conducted during the two weeks beginning on the Monday between the 6th and 12th of each month. The information obtained relates to the week before the interview (i.e. the reference week). Each year, to deal with operational difficulties involved with collecting and processing the Labour Force Survey around the Christmas and New Year holiday period, interviews for December start four weeks after November interviews start, and January interviews start five weeks after December interviews start. As a result, January interviewing may commence as early as the 8th or as late as the 14th, depending on the year. Occasionally, circumstances that present significant operational difficulties for survey collection can result in a change to the normal pattern for the start of interviewing.

7 Estimates from the Labour Force Survey are published first in this publication 31 days after the commencement of interviews for that month, with the exception of estimates for each December which are published 38 days after the commencement of interviews.

SCOPE OF SURVEY

8 The Labour Force Survey includes all persons aged 15 years and over except members of the permanent defence forces, certain diplomatic personnel of overseas governments customarily excluded from census and estimated population counts, overseas residents in Australia, and members of non-Australian defence forces (and their dependants) stationed in Australia.

COVERAGE

9 In the Labour Force Survey, coverage rules are applied which aim to ensure that each person is associated with only one dwelling, and hence has only one chance of selection. The coverage rules are necessarily a balance between theoretical and operational considerations. Nevertheless, the chance of a person being enumerated at two separate dwellings in the survey is considered to be negligible.

EXPLANATORY NOTES *continued*

POPULATION BENCHMARKS

10 Labour Force Survey estimates are calculated in such a way as to add up to independent estimates of the civilian population aged 15 years and over (population benchmarks). These population benchmarks are projections of the most recently released quarterly Estimated Resident Population (ERP) data. For information on the methodology used to produce the ERP see *Australian Demographic Statistics Quarterly* (cat. no. 3101.0). To create the population benchmarks for the Labour Force Survey, the most recently released quarterly ERP estimates are projected forward one quarter past the period for which they are required. The projection is based on the historical pattern of each population component - births, deaths, interstate migration and overseas migration. By projecting one quarter past that needed for the current population benchmarks, demographic changes are smoothed in, thereby making them less noticeable in the population benchmarks.

11 The ERP series are revised annually in the March quarter issue of *Australian Demographic Statistics Quarterly* (cat. no. 3101.0), released in September each year, to incorporate more up to date information available for the population components. The revised ERP estimates are used to update the quarterly population projections used in creating the Labour Force Survey population benchmarks. Benchmarks already used in producing Labour Force Survey estimates are not updated. A process of smoothing is used in the creation of population benchmarks to reduce the effect of these annual revisions to ERP estimates on the Labour Force Survey population benchmarks.

12 Every five years the ERP series are revised to incorporate additional information available from the latest Census of Population and Housing. Following the incorporation of Census information, the ERP series prior to the latest Census are final and subject to no further revision. Labour Force Survey population benchmarks, and the estimates, are revised following this 5-yearly revision in the ERP. From the February 2004 issue of this publication, labour force estimates have been compiled using population benchmarks based on the results of the 2001 Census of Population and Housing. Revisions were made in that issue to historical labour force estimates from January 1999 to January 2004.

ESTIMATION METHOD

13 The estimation method used in the Labour Force Survey is Composite Estimation, which was introduced in May 2007. Composite Estimation combines data collected in the previous six months with current month's data to produce the current month's estimates, thereby exploiting the high correlation between overlapping samples across months in the Labour Force Survey. The Composite Estimator combines the previous and current months' data by applying different factors according to length of time in the survey. After these factors are applied, the seven months of data are weighted to align with current month population benchmarks. For details see *Information Paper: Forthcoming Changes to Labour Force Statistics, 2007* (cat. no. 6292.0).

COMPARABILITY OF SERIES

14 From April 1986, the definition of employed persons was changed to include persons who worked without pay between 1 and 14 hours per week in a family business or on a farm (i.e. contributing family workers). For further information, see paragraphs 36 and 37 of the Explanatory Notes to the February 1987 issue of *Labour Force, Australia* (cat. no. 6203.0).

15 The ABS introduced telephone interviewing into the Labour Force Survey in August 1996. Implementation was phased in for each new sample group from August 1996 to February 1997. During the period of implementation, the new method produced different estimates than would have been obtained under the old methodology. The effect dissipated over the final months of implementation and was no longer discernible from February 1997. The estimates for February 1997 and onwards are directly comparable to estimates for periods prior to August 1996. For further details, see the feature article in the June 1997 issue of *Labour Force, Australia* (cat. no. 6203.0).

EXPLANATORY NOTES *continued*

COMPARABILITY OF SERIES

continued

16 From April 2001 the Labour Force Survey has been conducted using a redesigned questionnaire containing additional data items and some minor definitional changes. The definition of unemployed persons was changed to include all persons who were waiting to start work and were available to start in the reference week. This change was introduced in February 2004, when historical unit record data were revised from April 2001 to January 2004. This revision created a small trend break at April 2001 in unemployed persons and unemployment rate series. For further details, see *Information Paper: Forthcoming Changes to Labour Force Statistics* (cat. no. 6292.0), released in December 2003.

17 Core labour force series were revised in April 2001 for the period April 1986 to March 2001 for the remaining definitional changes introduced with the redesigned questionnaire, to reduce the impact of the changes on labour force series. For further details, see *Information Paper: Implementing the Redesigned Labour Force Survey Questionnaire* (cat. no. 6295.0) and *Information Paper: Questionnaires Used in the Labour Force Survey* (cat. no. 6232.0).

18 In May 2007, an improved method of estimation, known as composite estimation, was introduced into the Labour Force Survey. In introducing this change the ABS revised unit record data from April 2001 to April 2007 based on the new estimation method. While estimates for periods prior to April 2001 are unrevised and were compiled using a different estimation method, no trend break was identified in the employed persons series. Also, no change was identified in the trend breaks in the unemployed persons and unemployment rate series which arose with the introduction of a redesigned survey form in April 2001 (as noted above in paragraph 16). For further details, see *Information Paper: Forthcoming Changes to Labour Force Statistics, 2007* (cat. no. 6292.0), released on 21 May 2007.

SURVEY SAMPLE REDESIGN

19 The Labour Force Survey sample has been reselected using information collected in the 2006 Census of Population and Housing.

20 The bulk of the new sample will be phased in over the period November 2007 to June 2008, with one-eighth of this portion of the sample being introduced every month. The remainder of the sample (about 20% of the total), which covers less settled areas of Australia and non-private dwellings will be rotated in full for New South Wales, Western Australia, Northern Territory and Australian Capital Territory in March 2008, and for Victoria, Queensland, South Australia and Tasmania in April 2008. Such a pattern of implementation means that any changes to labour force estimates due to differences between the two samples, or any other influences, will be spread over the eight months.

21 For further details, see *Information Paper: Labour Force Survey Sample Design* (cat. no. 6269.0), released on 28 November 2007.

RELIABILITY OF ESTIMATES

22 Two types of error are possible in an estimate based on a sample survey: sampling error and non-sampling error.

23 Sampling error occurs because a sample, rather than the entire population, is surveyed. One measure of the likely difference resulting from not including all dwellings in the survey is given by the standard error. There are about two chances in three that a sample estimate will differ by less than one standard error from the figure that would have been obtained if all dwellings had been included in the survey, and about nineteen chances in twenty that the difference will be less than two standard errors. Standard errors of key estimates for the latest month and of movements since the previous month of these estimates are shown on pages 28 and 29. Standard errors for other estimates and other movements may be calculated by using the spreadsheet contained in *Labour Force Survey Standard Errors, Data Cube* (cat. no. 6298.0.55.001) which is available free of charge on the ABS website <<http://www.abs.gov.au>> (Statistics).

EXPLANATORY NOTES *continued*

RELIABILITY OF ESTIMATES

continued

24 Non-sampling error arises from inaccuracies in collecting, recording and processing the data. Every effort is made to minimise reporting error by the careful design of questionnaires, intensive training and supervision of interviewers, and efficient data processing procedures. Non-sampling error also arises because information cannot be obtained from all persons selected in the survey. The Labour Force Survey receives a high level of co-operation from individuals in selected dwellings, with the average response rate over the last year being 97%. See Glossary for definition of response rate.

SEASONAL ADJUSTMENT AND TREND ESTIMATION

25 Seasonal adjustment is a means of removing the estimated effects of normal seasonal variation from the series so that the effects of other influences on the series can be more clearly recognised. Seasonal adjustment does not aim to remove the irregular or non-seasonal influences which may be present in any particular month. This means that month-to-month movements of the seasonally adjusted estimates may not be reliable indicators of trend behaviour.

26 The Labour Force Survey uses the concurrent seasonal adjustment method to derive seasonal factors. Concurrent seasonal adjustment uses data up to the current month to estimate seasonal factors for the current and all previous months. This process can result in revisions each month to estimates for earlier periods. However, in most instances, the only noticeable revisions will be to the seasonally adjusted estimates for the previous month and one year prior to the current month.

27 Seasonal adjustment is able to remove the effect of events which occur at the same time in the survey every year. However, there are some events, like holidays, which are not always at the same time in the survey cycle or which are not at the same time across Australia. The effects of these types of events on Labour Force Survey estimates cannot in all cases be removed, because the pattern of their effects cannot be determined. However, two events which are adjusted for in the seasonally adjusted series are the January interview start date and the timing of Easter.

28 For more information on concurrent seasonal adjustment and survey proximity to holiday periods, see *Information Paper: Forthcoming Changes to Labour Force Statistics* (cat. no. 6292.0) released in December 2003.

29 While seasonal factors for the complete time series are estimated each month, they will continue to be reviewed annually at a more detailed level to take into account each additional year's original data. This annual review will not normally result in significant changes to published estimates. The review is usually conducted in February each year with the results released in the February issue of this publication.

30 The smoothing of seasonally adjusted series to produce 'trend' series reduces the impact of the irregular component of the seasonally adjusted series. These trend estimates are derived by applying a 13-term Henderson-weighted moving average to all months except the last six. The last six monthly trend estimates are obtained by applying surrogates of the Henderson average to the seasonally adjusted series. Trend estimates are used to analyse the underlying behaviour of a series over time.

31 While this smoothing technique enables estimates to be produced for the latest month, it does result in revisions in addition to those caused by the revision of seasonally adjusted estimates. Generally, revisions due to the use of surrogates of the Henderson average become smaller, and after three months have a negligible impact on the series.

EXPLANATORY NOTES *continued*

SEASONAL ADJUSTMENT AND TREND ESTIMATION *continued*

32 Trend estimates are published for the Northern Territory in table 10 and for the Australian Capital Territory in table 11. Unadjusted series for the two territories have shown, historically, a high degree of variability, which can lead to considerable revisions to the seasonally adjusted estimates each month when seasonal factors are estimated. For this reason, seasonally adjusted estimates are not currently published for the two Territories. In addition, caution should be exercised in the interpretation of trend estimates for the two territories, particularly for the three most recent months, where revisions may be relatively large.

33 For further information, see *A Guide to Interpreting Time Series – Monitoring Trends* (cat. no. 1349.0) or contact the Assistant Director, Time Series Analysis on (02) 6252 6345.

RELATED PUBLICATIONS

34 Users may also wish to refer to *Australian Labour Market Statistics* (cat. no. 6105.0). This publication contains additional tables and a detailed list of related publications. For further information about this publication, please contact the Assistant Director, Labour Market Statistics on (02) 6252 7636.

35 ABS Information about the labour market can be found on the Labour theme page on the ABS website <<http://www.abs.gov.au>>(Themes), or from ABS Bookshops.

36 Information about current publications and other products released by the ABS is available from the statistics page on the ABS website. The ABS also issues a daily Release Advice on the website (Future Releases) which details products to be released in the week ahead.

DATA AVAILABLE ON REQUEST

37 As well as the statistics included in this and related publications, the ABS may have other relevant data available. Inquiries should be made to the Labour Force contact officer on (02) 6252 6525 or to any ABS office.

EFFECTS OF ROUNDING

38 Estimates have been rounded and discrepancies may occur between sums of the component items and totals.

39 Estimates of movement shown in this publication are obtained by taking the difference of unrounded estimates. The movement estimate is then rounded to one decimal place. Therefore where a discrepancy occurs between the reported movement and the difference of the rounded estimates, the reported movement will be more accurate.

SYMBOLS AND ABBREVIATIONS

40 SYMBOLS AND ABBREVIATIONS

'000	thousands
ABS	Australian Bureau of Statistics
CAI	computer assisted interviewing
cat. no.	catalogue number
ERP	estimated resident population
f/t	full-time
LFS	Labour Force Survey
p/t	part-time
pts	percentage points
Seas adj.	seasonally adjusted
TAFE	Technical and Further Education

STANDARD ERRORS

STANDARD ERRORS

The estimates in this publication are based on information gained from the occupants of a sample survey of dwellings. Because the entire population is not surveyed, the published estimates are subject to sampling error. The most common way of quantifying such sampling error is to calculate the standard error for the published estimate or statistic. For more information, see paragraph 23 of the Explanatory Notes.

LEVEL ESTIMATES

To illustrate, let us say the published level estimate for employed persons aged 15–19 years is 700,000 and the associated standard error is 8,300. The standard error is then used to interpret the level estimate of 700,000. For instance, the standard error of 8,300 indicates that:

- There are approximately two chances in three that the real value falls within the range 691,700 to 708,300 (700,000 + or – 8,300)
- There are approximately nineteen chances in twenty that the real value falls within the range 683,400 to 716,600 (700,000 + or – 16,600).

The real value in this case is the result we would obtain if we could enumerate the total population.

The following table shows the standard errors for this month's level estimates.

AUSTRALIA												
		NSW	Vic.	Qld	SA	WA	Tas.	NT	ACT	Males	Females	Persons
Aged 15 years and over												
Employed												
Full time	'000	19.4	19.1	13.7	6.3	8.5	2.7	4.1	2.1	24.4	17.3	29.5
Part time	'000	12.9	11.4	8.6	4.4	5.6	1.7	1.3	1.3	9.4	14.9	18.3
Total	'000	21.2	22.9	15.5	7.2	9.3	3.0	4.9	2.3	26.3	23.8	33.2
Unemployed												
Looking for f/t work	'000	7.4	5.4	4.8	2.3	2.2	1.1	0.6	0.6	7.5	6.8	10.2
Looking for p/t work	'000	4.6	4.4	3.0	1.8	1.8	0.6	0.6	0.5	4.2	5.7	7.2
Total	'000	8.8	7.1	5.6	2.8	2.9	1.2	1.0	0.8	8.6	8.9	12.6
Labour force	'000	21.4	23.5	15.8	7.3	9.4	3.1	5.1	2.3	26.8	24.5	33.7
Not in labour force	'000	19.8	21.1	13.6	6.5	8.9	3.0	4.1	2.1	21.7	26.2	30.9
Unemployment rate												
Looking for f/t work	pts	0.3	0.3	0.3	0.4	0.3	0.6	0.7	0.4	0.1	0.2	0.1
Looking for p/t work	pts	0.5	0.5	0.5	0.7	0.6	0.9	2.4	1.1	0.5	0.3	0.2
Total	pts	0.2	0.3	0.2	0.3	0.2	0.5	0.8	0.4	0.1	0.2	0.1
Participation rate	pts	0.4	0.6	0.5	0.6	0.6	0.8	3.2	0.8	0.3	0.3	0.2
Aged 15–19 years												
Employed												
Full time	'000	3.6	2.7	2.7	1.1	1.8	0.6	0.4	0.4	4.7	3.6	5.5
Part time	'000	4.3	3.8	3.4	1.5	1.9	0.6	0.4	0.5	4.9	5.5	7.0
Total	'000	5.5	4.6	4.3	1.8	2.6	0.8	0.6	0.7	6.4	6.2	8.8
Unemployed												
Looking for f/t work	'000	2.9	1.9	2.0	1.0	0.9	0.4	0.3	0.2	3.0	2.8	4.2
Looking for p/t work	'000	2.7	2.6	1.8	1.0	0.9	0.4	0.2	0.4	2.9	3.1	4.3
Total	'000	4.1	3.2	2.8	1.5	1.3	0.6	0.4	0.4	4.2	4.2	6.0
Labour force	'000	6.0	5.0	4.7	2.0	2.7	0.9	0.6	0.7	6.8	6.7	9.4
Not in labour force	'000	7.3	5.7	4.1	2.2	2.9	0.9	0.9	0.8	7.1	6.9	10.1
Unemployment rate												
Looking for f/t work	pts	2.6	3.0	2.4	4.1	2.0	4.2	7.4	3.8	1.4	2.2	1.2
Looking for p/t work	pts	1.7	1.8	1.5	2.5	1.7	3.8	5.4	4.1	1.2	1.0	0.8
Total	pts	1.5	1.6	1.3	2.2	1.3	2.8	4.7	2.9	0.9	1.0	0.7
Participation rate	pts	1.3	1.4	1.6	1.9	1.8	2.6	4.2	3.0	0.9	0.9	0.7
Unemployment to population ratio – looking for f/t work	pts	0.6	0.5	0.7	1.0	0.6	1.2	2.2	0.9	0.4	0.4	0.3

STANDARD ERRORS *continued*

MOVEMENT ESTIMATES

The following example illustrates how to use the standard error to interpret a movement estimate. Let us say that one month the published level estimate for females employed part-time in Australia is 1,890,000; the next month the published level estimate is 1,900,000 and the associated standard error for the movement estimate is 9,500. The standard error is then used to interpret the published movement estimate of 10,000. For instance, the standard error of 9,500 indicates that:

- There are approximately two chances in three that the real movement between the two months falls within the range 500 to 19,500 (10,000 + or - 9,500)
- There are approximately nineteen chances in twenty that the real movement falls within the range -9,000 to 29,000 (10,000 + or - 19,000).

The following table shows the standard errors for this month's movement estimates.

		AUSTRALIA										
		NSW	Vic.	Qld	SA	WA	Tas.	NT	ACT	Males	Females	Persons
Aged 15 years and over												
Employed												
Full time	'000	13.1	10.4	8.9	3.6	5.5	1.7	1.3	1.5	16.3	11.9	20.7
Part time	'000	8.0	6.6	5.4	2.5	3.4	1.1	0.6	0.9	7.0	10.5	12.4
Total	'000	15.5	12.4	11.6	4.9	6.7	2.0	1.5	1.7	17.8	16.0	24.8
Unemployed												
Looking for f/t work	'000	7.6	5.5	5.1	2.2	2.7	1.0	0.5	0.7	8.0	7.0	10.7
Looking for p/t work	'000	4.6	4.3	3.1	1.6	1.9	0.6	0.6	0.6	4.4	6.0	7.4
Total	'000	8.9	6.9	6.1	2.8	3.2	1.2	0.8	0.9	9.2	9.3	13.1
Labour force	'000	15.9	12.8	12.1	5.2	6.9	2.1	1.5	1.8	18.2	16.4	25.5
Not in labour force	'000	14.6	11.6	10.6	4.7	5.9	2.0	1.3	1.7	13.7	17.5	23.0
Unemployment rate												
Looking for f/t work	pts	0.3	0.3	0.3	0.4	0.3	0.6	0.7	0.4	0.2	0.2	0.1
Looking for p/t work	pts	0.5	0.6	0.5	0.7	0.6	0.9	2.7	1.1	0.5	0.3	0.2
Total	pts	0.3	0.3	0.3	0.4	0.3	0.5	0.9	0.4	0.2	0.2	0.1
Participation rate	pts	0.3	0.3	0.4	0.4	0.4	0.5	1.0	0.7	0.2	0.2	0.1
Aged 15-19 years												
Employed												
Full time	'000	2.9	2.1	2.2	0.9	1.5	0.4	0.3	0.4	3.8	3.1	4.5
Part time	'000	3.5	2.9	2.7	1.2	1.6	0.5	0.3	0.4	3.9	4.4	5.4
Total	'000	4.3	3.4	3.2	1.4	2.1	0.6	0.4	0.5	5.0	4.9	6.7
Unemployed												
Looking for f/t work	'000	3.3	2.2	2.1	1.0	1.3	0.5	0.3	0.3	3.6	3.0	4.7
Looking for p/t work	'000	2.7	2.6	2.0	1.1	1.1	0.4	0.4	0.4	3.1	3.5	4.5
Total	'000	4.3	3.3	2.9	1.4	1.7	0.6	0.5	0.5	4.6	4.7	6.5
Labour force	'000	4.6	3.7	3.4	1.5	2.2	0.6	0.4	0.6	5.3	5.3	7.1
Not in labour force	'000	4.7	3.7	2.9	1.4	2.0	0.6	0.6	0.6	5.2	5.1	7.0
Unemployment rate												
Looking for f/t work	pts	2.8	3.2	2.4	4.2	2.3	5.0	9.7	4.6	1.5	2.3	1.3
Looking for p/t work	pts	1.7	1.8	1.5	2.6	1.9	3.9	7.2	4.1	1.2	1.1	0.8
Total	pts	1.6	1.6	1.4	2.3	1.5	3.1	6.1	3.0	1.0	1.0	0.7
Participation rate	pts	1.0	1.1	1.2	1.4	1.5	1.9	2.7	2.4	0.7	0.8	0.5
Unemployment to population ratio - looking for f/t work												
	pts	0.7	0.6	0.7	0.9	0.9	1.4	2.0	1.3	0.5	0.4	0.3

GLOSSARY

Actively looking for work	Includes writing, telephoning or applying in person to an employer for work; answering an advertisement for a job; checking factory noticeboards or the touchscreens at the Centrelink offices; being registered with Centrelink as a jobseeker; checking or registering with any other employment agency; advertising or tendering for work; and contacting friends or relatives.
Attending full-time education	Persons aged 15–24 years enrolled at secondary or high school or enrolled as a full-time student at a Technical and Further Education (TAFE) college, university, or other educational institution in the reference week.
Attending school	Persons aged 15–19 years enrolled at secondary or high school in the reference week.
Attending tertiary educational institution full time	Persons aged 15–24 years enrolled full time at a TAFE college, university, or other educational institution in the reference week, except those persons aged 15–19 years who were still attending school.
Civilian population aged 15 years and over	All usual residents of Australia aged 15 years and over except members of the permanent defence forces, certain diplomatic personnel of overseas governments customarily excluded from census and estimated population counts, overseas residents in Australia, and members of non-Australian defence forces (and their dependants) stationed in Australia.
Composite Estimation	The estimation methodology used in the Labour Force Survey. Composite Estimation uses sample responses from nearby months as well as from the reference month to derive estimates for the reference month. This approach achieves gains in efficiency by exploiting the high similarity between the responses provided by the same respondent in previous months. For details see <i>Information Paper: Forthcoming Changes to Labour Force Statistics, 2007</i> (cat. no. 6292.0).
Employed	All persons aged 15 years and over who, during the reference week: <ul style="list-style-type: none">■ worked for one hour or more for pay, profit, commission or payment in kind in a job or business, or on a farm (comprising employees, employers and own account workers); or■ worked for one hour or more without pay in a family business or on a farm (i.e. contributing family workers); or■ were employees who had a job but were not at work and were:<ul style="list-style-type: none">■ away from work for less than four weeks up to the end of the reference week; or■ away from work for more than four weeks up to the end of the reference week and received pay for some or all of the four week period to the end of the reference week; or■ away from work as a standard work or shift arrangement; or■ on strike or locked out; or■ on workers' compensation and expected to return to their job; or■ were employers or own account workers, who had a job, business or farm, but were not at work.
Employment to population ratio	For any group, the number of employed persons expressed as a percentage of the civilian population in the same group.
Full-time workers	Employed persons who usually worked 35 hours or more a week (in all jobs) and those who, although usually working less than 35 hours a week, worked 35 hours or more during the reference week.
Labour force	For any group, persons who were employed or unemployed, as defined.
Labour force status	A classification of the civilian population aged 15 years and over into employed, unemployed or not in the labour force, as defined. The definitions conform closely to the international standard definitions adopted by the International Conferences of Labour Statisticians.
Not in labour force	Persons who were not in the categories employed or unemployed as defined.

GLOSSARY *continued*

Participation rate	For any group, the labour force expressed as a percentage of the civilian population aged 15 years and over in the same group.
Part-time workers	Employed persons who usually worked less than 35 hours a week (in all jobs) and either did so during the reference week, or were not at work in the reference week.
Response rate	The number of fully responding dwellings expressed as a percentage of the total number of dwellings excluding sample loss. Examples of sample loss include: dwellings where all persons are out of scope and/or coverage; vacant dwellings; dwellings under construction; dwellings converted to non-dwellings; derelict dwellings; and demolished dwellings.
Seasonally adjusted series	A time series of estimates with the estimated effects of normal seasonal variation removed. See Explanatory Notes 25 to 29 for more detail.
Trend series	A smoothed seasonally adjusted series of estimates. See Explanatory Notes 30 to 33 for more detail.
Unemployed	Persons aged 15 years and over who were not employed during the reference week, and: <ul style="list-style-type: none">■ had actively looked for full-time or part-time work at any time in the four weeks up to the end of the reference week and were available for work in the reference week; or■ were waiting to start a new job within four weeks from the end of the reference week and could have started in the reference week if the job had been available then.
Unemployed looking for full-time work	Unemployed persons who: <ul style="list-style-type: none">■ actively looked for full-time work; or■ were waiting to start a new full-time job.
Unemployed looking for part-time work	Unemployed persons who: <ul style="list-style-type: none">■ actively looked for part-time work only; or■ were waiting to start a new part-time job.
Unemployment rate	For any group, the number of unemployed persons expressed as a percentage of the labour force in the same group.
Unemployment to population ratio	For any group, the number of unemployed persons expressed as a percentage of the civilian population in the same group.

FOR MORE INFORMATION . . .

INTERNET **www.abs.gov.au** the ABS website is the best place for data from our publications and information about the ABS.

INFORMATION AND REFERRAL SERVICE

Our consultants can help you access the full range of information published by the ABS that is available free of charge from our website. Information tailored to your needs can also be requested as a 'user pays' service. Specialists are on hand to help you with analytical or methodological advice.

PHONE 1300 135 070

EMAIL client.services@abs.gov.au

FAX 1300 135 211

POST Client Services, ABS, GPO Box 796, Sydney NSW 2001

FREE ACCESS TO STATISTICS

All statistics on the ABS website can be downloaded free of charge.

WEB ADDRESS www.abs.gov.au